

# ***CJV200*** **SERIES**

**160 / 130 / 75**

**Print & Cut Inkjet Printer**



# CJV200 Series



Eco-Solvent roll-based print & cut device

## Total sign printing package

High value in a small footprint, the CJV200 provides indoor and outdoor durable printing with an integrated cutter and easy-to-use software for the perfect stand-alone bundle.

- Easily produce indoor and outdoor prints on a large selection of media with 'one printer to do it all' versatility in a small footprint.
- Enjoy outstanding quality and productivity, plus the industry's best outdoor durability at an attractive price point.
- Print a wide range of applications using this complete system with print & cut device, software, and a range of inks.
- Easy to use with paired RIP software for extreme accuracy when creating instant decals and large wall graphics.
- Outstanding quality and productivity at an attractive price point.
- Mimaki Core Technologies deliver exceptional results, economically, and with maximum productivity.
- Select from three model widths to suit your production needs.
- Three year Parts warranty - including Print Heads.

32"

54"

64"



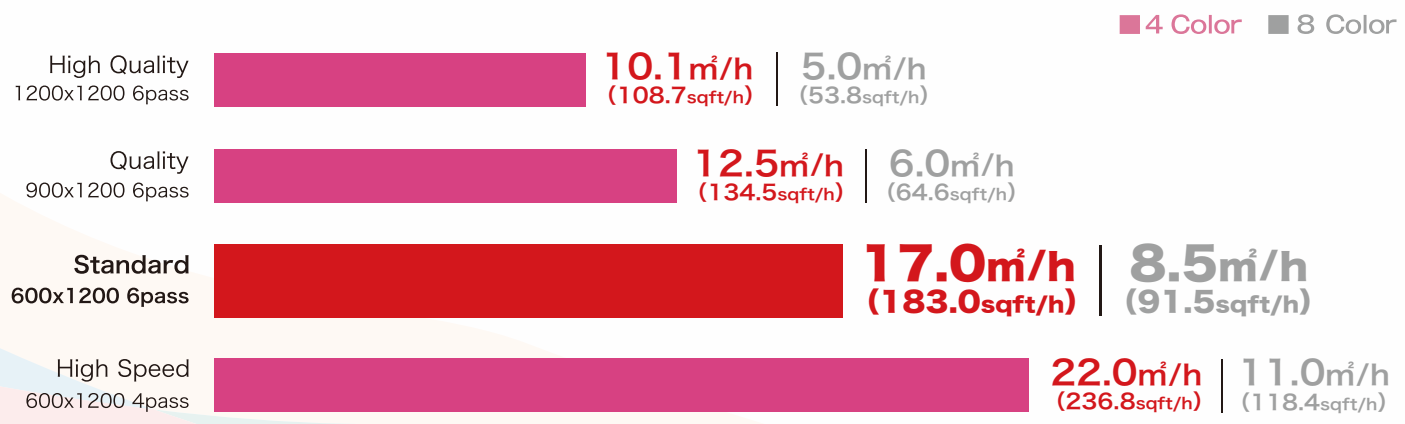
# Overwhelming Beauty

The CJV200 is equipped with a single print head of "330 Engine" in Mimaki's flagship printer.

The technology of precise control of a minimum 3pl ink drop and the print head that delivers high-density prints, even at high speeds, resulting in overwhelmingly beautiful printing.



## Reliable Productivity even during Peak Season



CJV200-160 print speed



h



## Easy for Everyone

### Simple Design

#### Single Print Head - Simple Maintenance

Single print head system contributes less cleaning time and adjustment time. The simple design allows you to work quickly and easily.



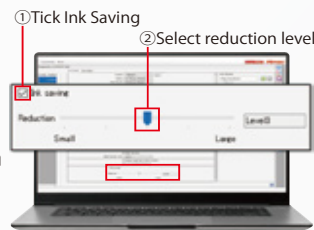
#### Wide Open Cover for Easy Access

#### Up-Facing Control Panel for Easy View



### Reduce Ink Consumption with Just 2 Clicks Ink Saving Function

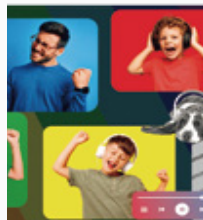
Anyone can easily reduce ink consumption without technical expertise. This function is available with any media and profiles.



5-level adjustment from level 1 to level 5



Ink Saving **OFF**  
(Default)



Ink Saving **Level 3**  
(Approx. 30% reduction)



Ink Saving **Level 5**  
(Approx. 50% reduction)

### Easy and Precise Automatic Set Up

Automatically performs necessary adjustment at the media setup to ensure optimal image quality at all times.

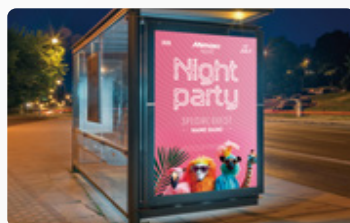
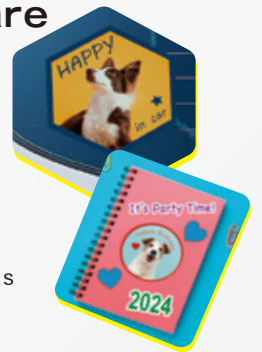
(DAS | Dot Adjustment System )



### Simple Design Software



SimpleCreate is software that allows you to create labels, POP, stickers, and other designs without a need of DTP software. It provides simple tools for creating designs and cutlines, as well as direct output from the software.



# Mimaki Cloud Technology **PICT**

The operating status conditions of the printer and the amounts of inks used can be monitored remotely. PICT allows you to do other work during printing, helping you to perform operations in a planned manner.

You can also schedule maintenance and preparation for ink refilling in advance.






## Software

### Raster Link 7



- Combination of upgraded usability and functionality**
- Improves reproducibility of special effects (such as transparency) of PDF data
  - Increases RIP processing speed of PDF data by 25% on average
  - Prints out the variable data by Variable print function
  - Displays frequently used setting and pop-up windows

## Specifications

	CJV200-160	CJV200-130	CJV200-75
Item			
Print head	On-demand piezo head		
Print resolution	Y:600, 900, 1200dpi X:600, 1200dpi		
Head gap	2levels by manual (1.5mm / 2.0mm )		
Ink	Type	SS21、SS22、BS4	
	Color	4color(C,M,Y,K) 8color(C,M,Y,K,Lc,Lm,Lk,Or)	
	Capacity	440ml	
Ink circulation	Yes		
Max.Load capacity	1620mm(63.8in)	1371mm(54in)	810mm(31.9in)
Max.Printable width	1610mm(63.4in)	1361mm(53.5in)	800mm(31.5in)
Media roll outer diameter	φ180mm or less (7.1in)		
Media roll weight	25kg (55.1 lb.) or less		
Media roll inside diameter	2 / 3 inch		
Cut function	Cut speed / acceleration	Speed:Max,300 mm/s Acceleration:Max. 0.5G	
	Cut pressure	10-450gf	
	Cutter response times	10 times / sec	
	Cut speed / acceleration	±0.2 mm (Excluding expansion and contraction of film due to temperature)	
Interface	Ethernet 1000 BASE-TT(Recommended) / USB 2.0 Hi-speed		
Power	AC(100-120V/200-240V±10%)×2 50/60Hz±1Hz		
Power consumption	Max,1320W x2 / 4,5W or less (Sleep mode)		
Operational environment	Temperature	20 - 30 degC (68-86 degF)	
	Humidity	35 - 65% Rh (Non condensing)	
	Guaranteed accuracy temperature	20 - 25 degC (68 - 77 degF)	
	Dust level	Equivalent to general office	
Dimensions (WxDxH)	2,770mm × 748mm × 1,370mm (109 × 29 × 54 in)	2,520mm × 748mm × 1,370mm (99 × 29 × 54 in)	1,960mm × 748mm × 1,370mm (77 × 29 × 54 in)
Weight	140kg(309lb)	130kg(287lb)	105kg(231lb)

