

The Pursuit of Excellence is Simple!



Print & Cut
Eco solvent Roll-to-Roll Entry Model

200 series

MIMAKI ENGINEERING CO., LTD.
Global Marketing SG
2024/9/4
Ver1.0

Targets and Applications

	CJV200-160 / CJV200-130	CJV200-75
Target	Sign store, printing services, vehicle graphics store	Label and sticker shop • in-house designer
Application	Outdoor signage, electric signage, banners, car wrapping, POP, window displays, stickers, wallpaper	Stickers, labels, POP, heat transfer



Overview : Main Unit Mechanism

Ink supply system

- Supports SS22, BS4 (SS21 available in spring 2025)
- UISS available in 4-color ink sets

*When using BS4 ink, please also prepare ECO CASE4.

*SS22 ink 1L pack | BS4 ink 2L pack is also available.

OPT-J0364 MBIS3 Bulk Supply Unit and OPT-J0576 MBIS BKT OPT (attachment) are required.

CJV200 series **-160 / -130 / -75**

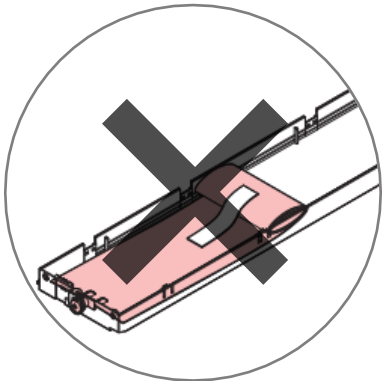
1600mm/64inch

1300mm/54inch

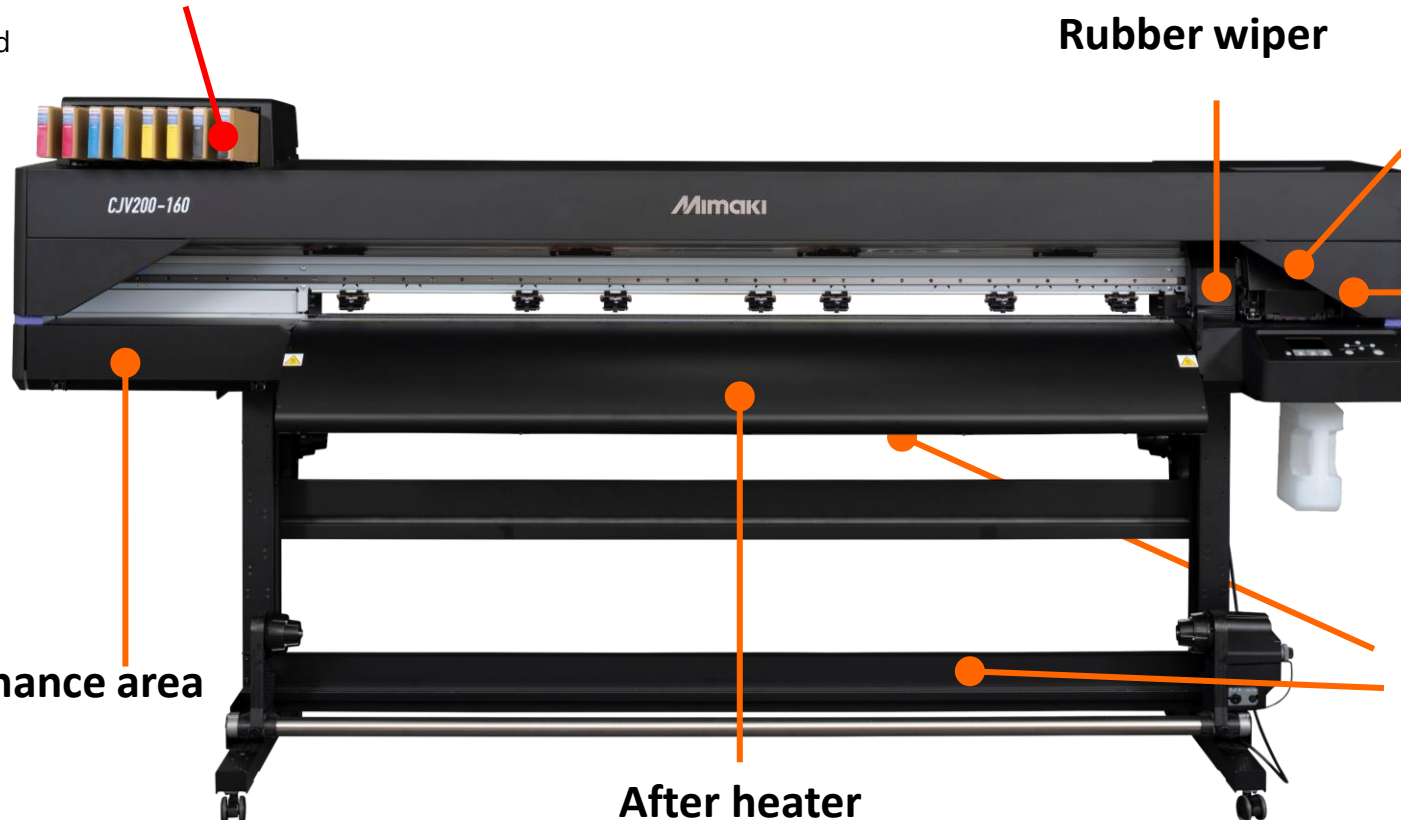
750mm/32inch

Cartridge insertion area is designed at an angle.

The work of bending ink packs, which was necessary when using Eco Case + 600 ml packs, is no longer necessary!



Maintenance area



Rubber wiper

Cutter Unit

Single head

- Same head as 330 Series

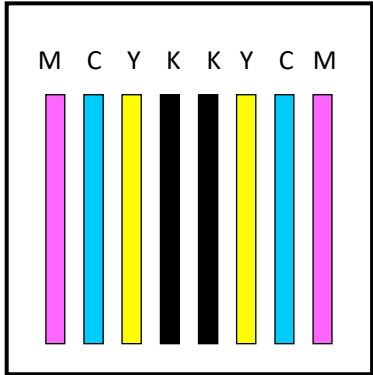


Feeding unit / Take-up unit
(Max. weight up to 25kg)

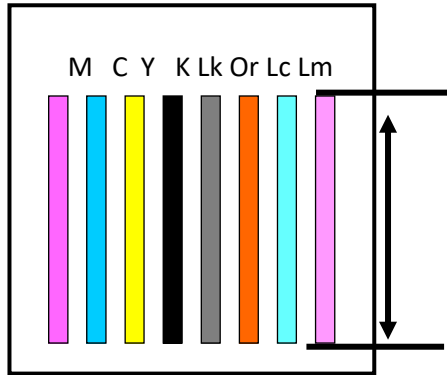
After heater

Overview : Ink set

4Color



8 Color



Type	Ink set	Head configuration	Ink Capacity
BS4	4C	M C Y K K Y C M	600ml ink package 2L ink package (MBIS OPT)
SS22	4C	M C Y K K Y C M	440ml Cartridge 1L ink package (MBIS OPT)
	8C	M C Y K Lk Or Lc Lm	
SS21	4C	M C Y K K Y C M	440ml Cartridge 2L ink package (MBIS OPT) Support scheduled for spring 2025.
	8C	M C Y K Lk Or Lc Lm	

*When using BS4 ink, please also prepare ECO CASE4.

SS22 GBL-free ink

The SS22 ink does not contain GBL components of which are subject to stricter regulations.

Uses environmentally friendly paper-cut ridge



Inherits **SS21** ink functionality
Industry-leading outdoor weather resistance



Mimaki's ink is resistant to fading.

High quality and ease of use for various applications

01 Superb Image Quality

Achieved with (C)JV 330 technology

02 Reliable Productivity

Even during peak season

03 Pursuit of Simplicity



01

Superb Image Quality

Achieved with (C)JV 330 technology

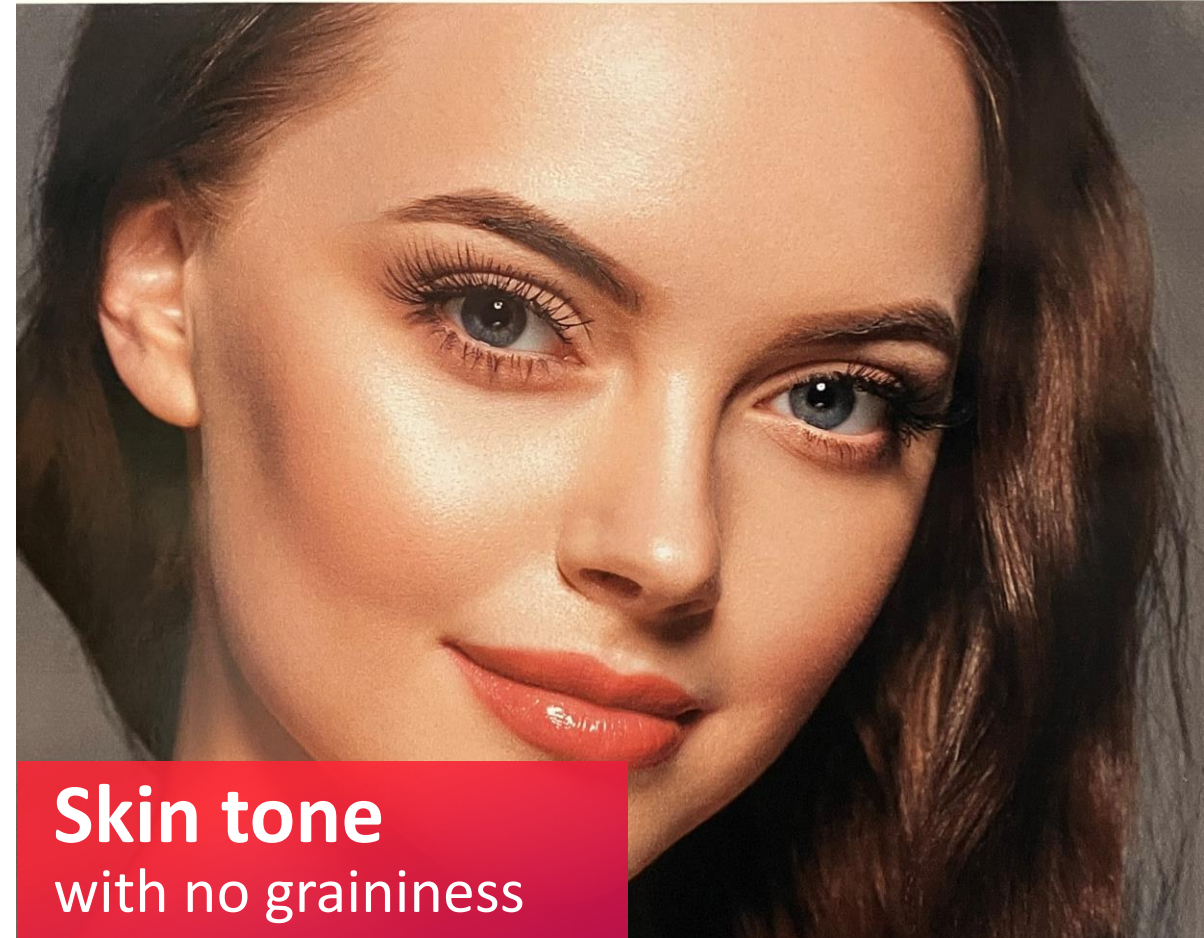
Single 330 Engine for beautiful solid colors and skin tones

The 330 printhead, which can eject fine ink at high density, is precisely controlled by the 330 control technology to achieve high image quality.



C100/M0/Y100/K50

Beautiful solid color
with few streaks or irregularities



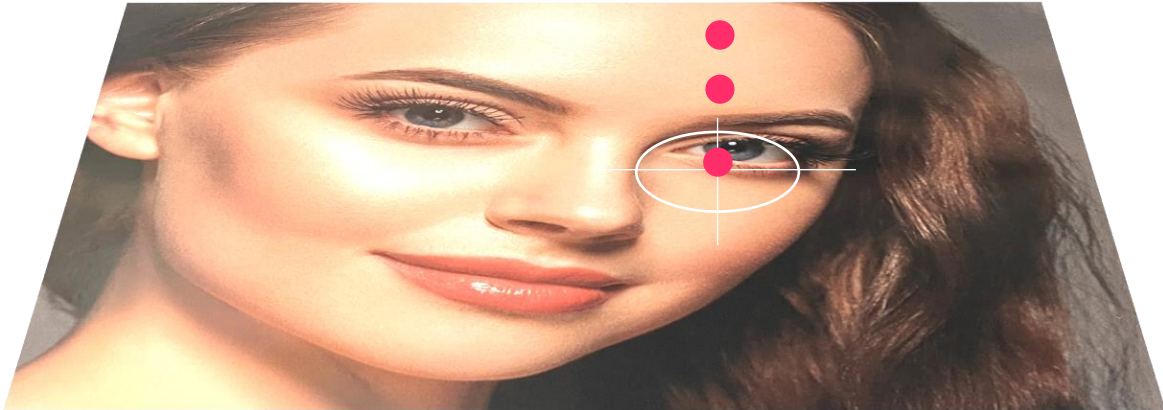
Skin tone
with no graininess

330 Dispensing Control Technology

Precise control of fine inks as small as 3pl

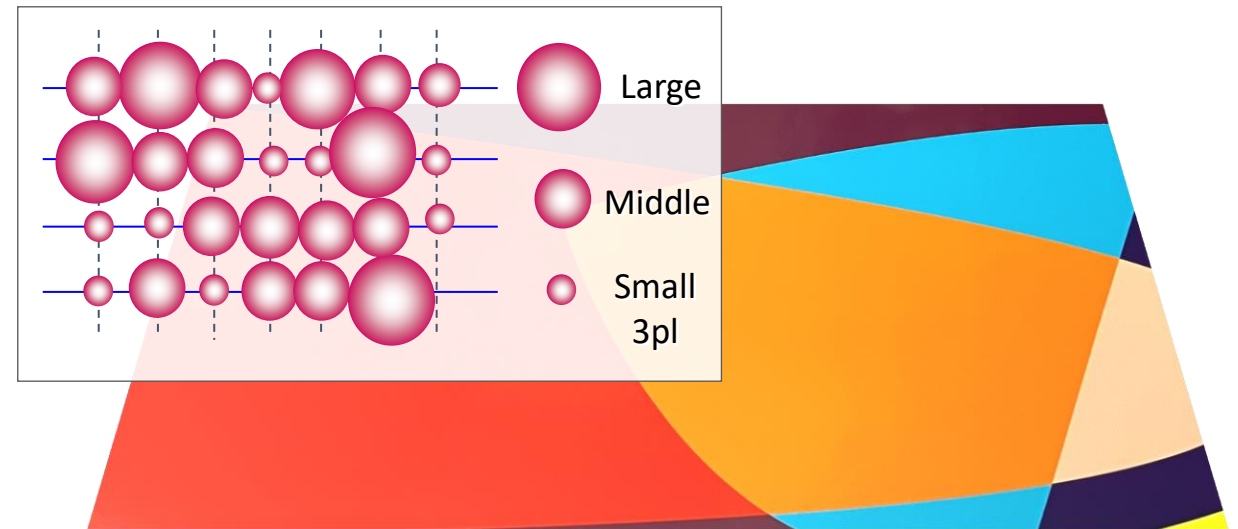
High image quality with less graininess is achieved by ejecting ink precisely at the targeted point.

HEAD



High density and beautiful solid expression is possible even at high speeds.

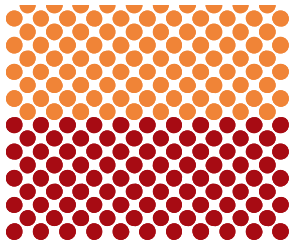
Three types of ink of different sizes are precisely controlled. Large ink droplets neatly fill solid areas, and in combination with small dots, produce high image quality with rich gradation.



Reduce Streaking and Unevenness

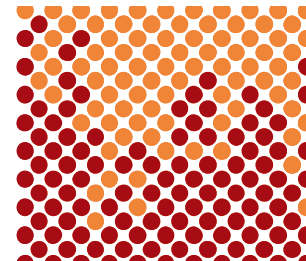
MAPS4 – Banding Reduction System

● Without MAPS



Printing without blurring the path boundaries makes it easy to produce streaks and irregularities.

● With MAPS



High-quality printing without streaks or irregularities due to gradient printing and blurred path boundaries

02

Reliable Productivity

Even during peak season



Practical 17.0 m²/h (183.0 sqft/h)

4 Color Practical **17.0m²/h** (183.0sqft/h)

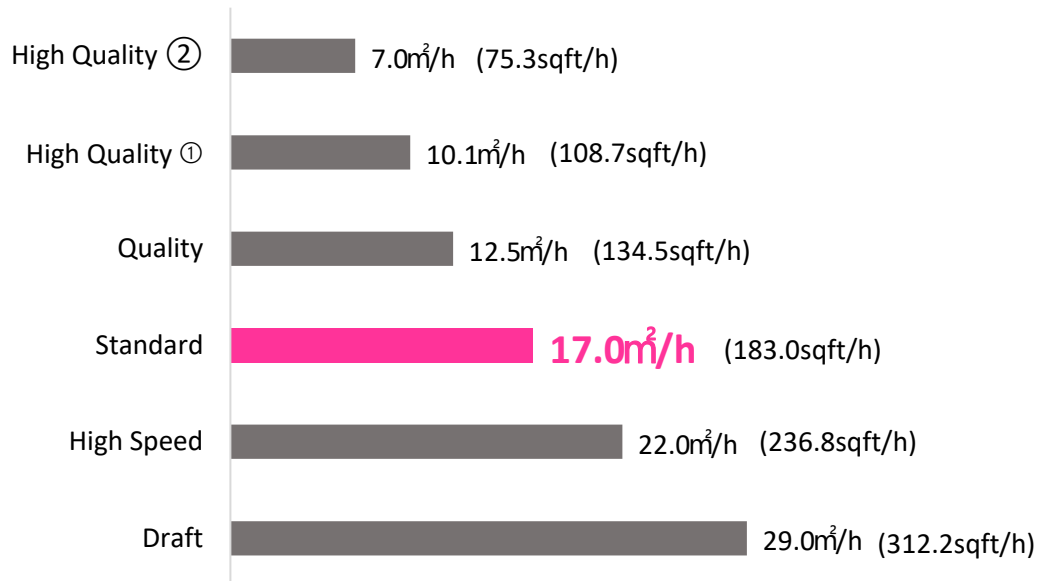
4Color PVC

Mode	Resolution(dpi)	Pass	160 wide	130 wide	75 wide
High Quality 2	1200 x 1200	8pass	7.0m ² /h	6.5m ² /h	5.5m ² /h
High Quality 1	1200 x 1200	6pass	10.1m ² /h	9.5m ² /h	7.5m ² /h
Quality	900 x 1200	6pass	12.5m ² /h	11.0m ² /h	9.0m ² /h
Standard	600 x 1200	6pass	17.0m ² /h	15.0m ² /h	11.0m ² /h
High Speed	600 x 1200	4pass	22.0m ² /h	20.0m ² /h	15.0m ² /h
Draft	900 x 600	2pass	29.0m ² /h	27.0m ² /h	21.0m ² /h

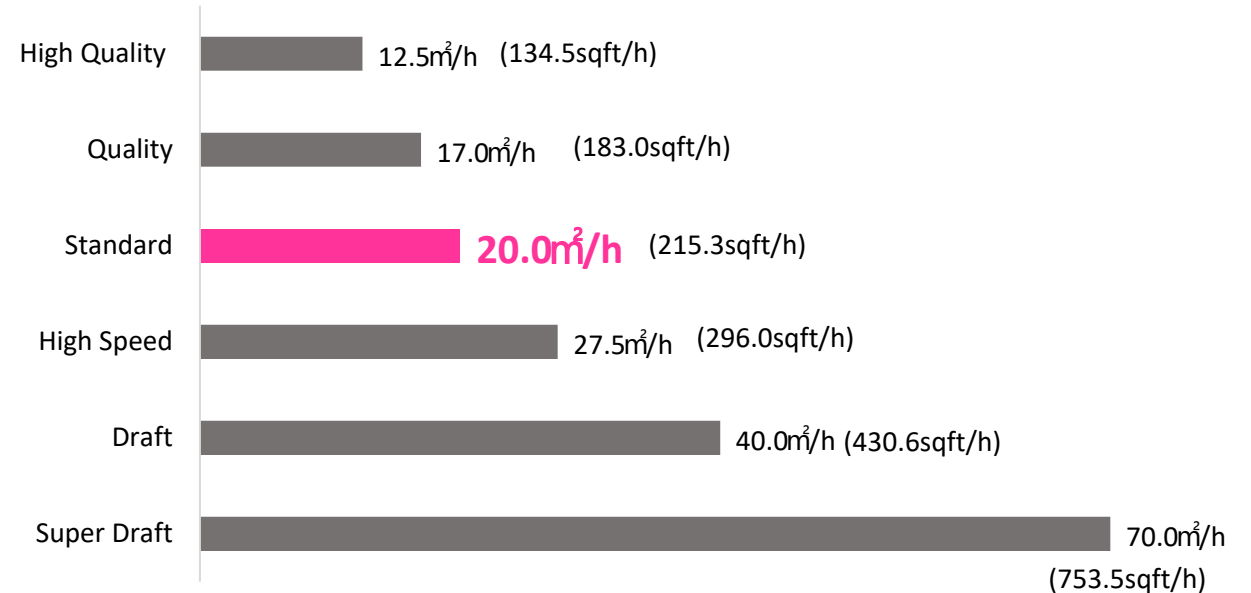
4Color Banner

Mode	Resolution(dpi)	Pass	160 wide	130 wide	75 wide
High Quality	900 x 1200	6pass	12.5m ² /h	11.0m ² /h	9.0m ² /h
Quality	600 x 1200	6pass	17.0m ² /h	15.0m ² /h	11.0m ² /h
Standard	600 x 1200	4pass	20.0m ² /h	18.0m ² /h	13.0m ² /h
High Speed	900 x 600	2pass	27.5m ² /h	25.0m ² /h	19.5m ² /h
Draft	600 x 600	2pass	40.0m ² /h	37.0m ² /h	30.0m ² /h
Super Draft	300 x 600	1pass	70.0m ² /h	65.0m ² /h	50.0m ² /h

160 wide Printing speed



160 wide Printing speed



8 Color Practical 8.5m²/h (91.5sqft/h)

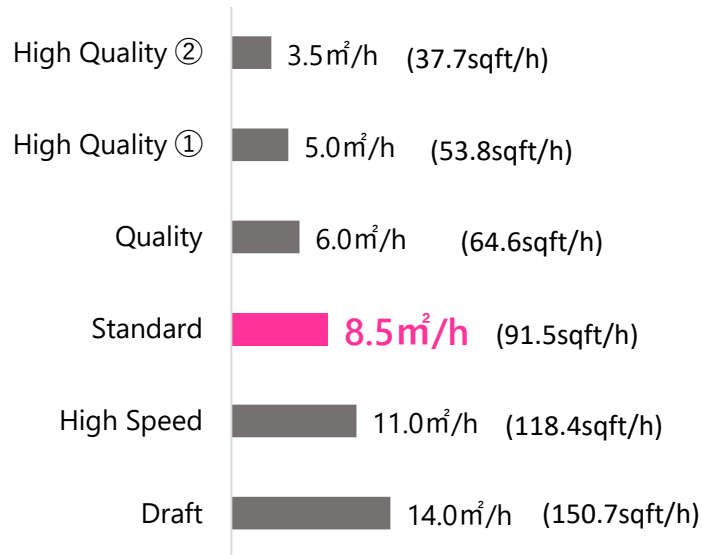
8Color PVC

Mode	Resolution(dpi)	Pass	160 wide	130wide	75wide
High Quality 2	1200 x 1200	16pass	3.5 m ² /h	3.0 m ² /h	2.5 m ² /h
High Quality 1	1200 x 1200	12pass	5.0 m ² /h	4.5 m ² /h	3.5 m ² /h
Quality	900 x 1200	12pass	6.0 m ² /h	5.5 m ² /h	4.5 m ² /h
Standard	600 x 1200	12pass	8.5 m ² /h	7.5 m ² /h	5.5 m ² /h
High Speed	600 x 1200	8pass	11.0 m ² /h	10.0 m ² /h	8.0 m ² /h
Draft	900 x 600	4pass	14.0 m ² /h	13.0 m ² /h	11.0 m ² /h

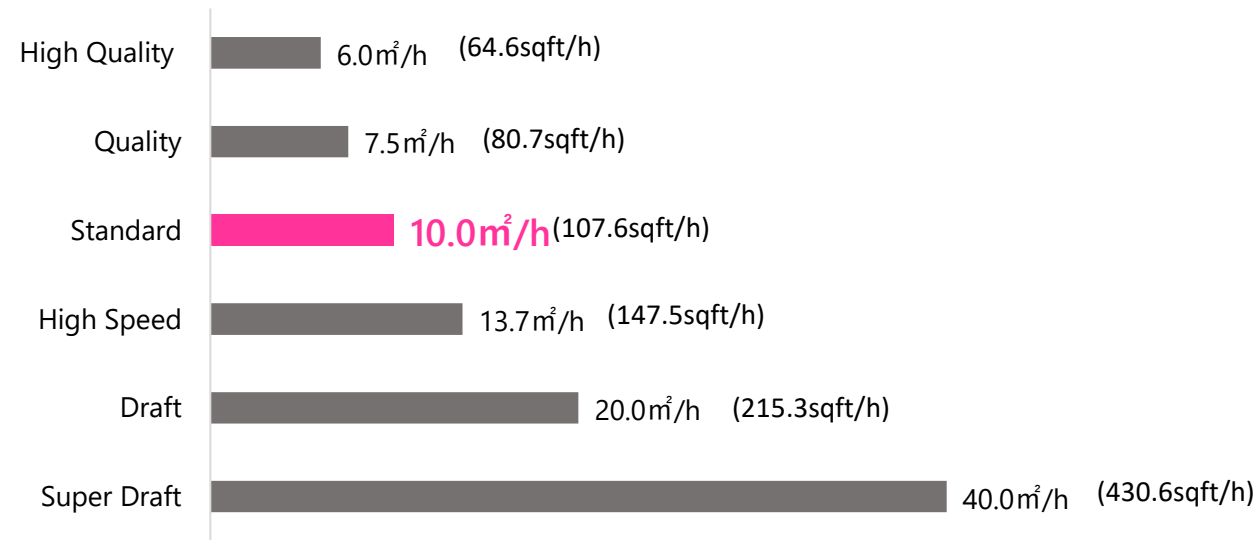
8Color Banner

Mode	Resolution(dpi)	Pass	160wide	130wide	75wide
High Quality	900 x 1200	12pass	6.0 m ² /h	5.5 m ² /h	4.5 m ² /h
Quality	600 x 1200	12pass	8.5 m ² /h	7.5 m ² /h	5.5 m ² /h
Standard	600 x 1200	8pass	10.0 m ² /h	9.0 m ² /h	6.5 m ² /h
High Speed	900 x 600	4pass	13.7 m ² /h	12.5 m ² /h	9.7 m ² /h
Draft	600 x 600	8pass	20.0 m ² /h	18.5 m ² /h	15.0 m ² /h
Super Draft	300 x 600	2pass	40.0 m ² /h	37.0 m ² /h	30.0 m ² /h

160 wide Printing speed



160 wide Printing speed



Reliable Productivity and High Image Quality

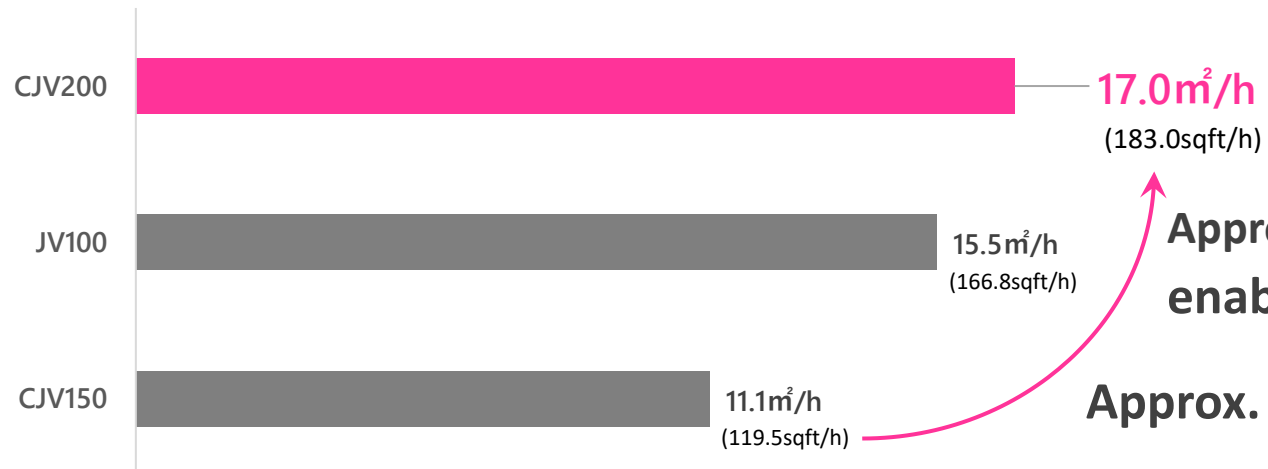
CJV150



CJV200



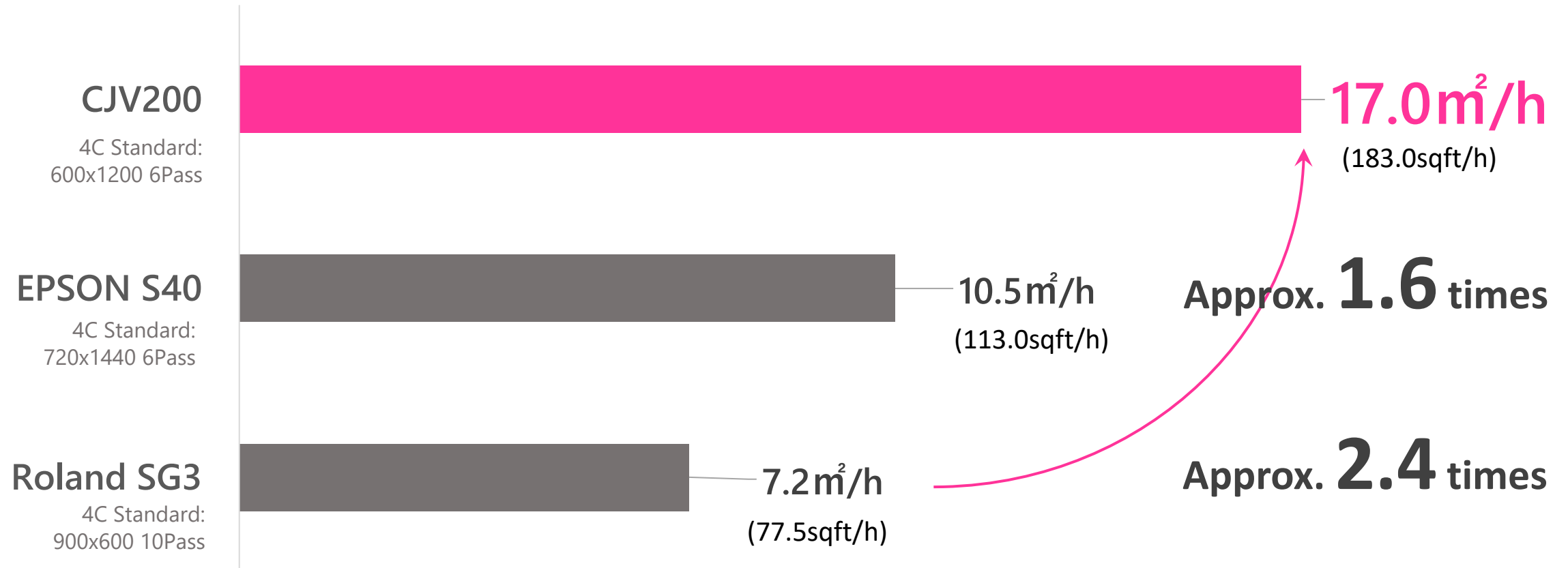
JV100



Approx. **1.1 times** faster than JV100, enabling more beautiful solid color expression.

Approx. **1.5 times** the production of CJV150

Entry-level machine with top-class productivity





03

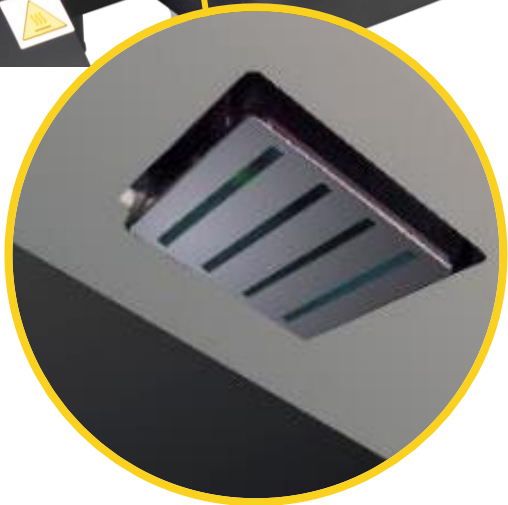
Pursuit of Simplicity

Simple Design that Satisfies the Three "Ease of Use" Requirements

Wide-opening cover
for easy access



Upward-facing panel
for easy operation



Single head
for easy maintenance

Convenient space for tools
such as pens, tape, and
cutters.



Simple Design Allows More Efficient Work

Reduces waiting time
for cleaning to **1/3**

Automatic dot position adjustment
about **1.6** times faster (DAS)

	JV100	CJV200
Soft :	3min 43sec	56 sec
Normal :	4min 11sec	1min 9sec
Hard :	4min 30sec	1min 27sec

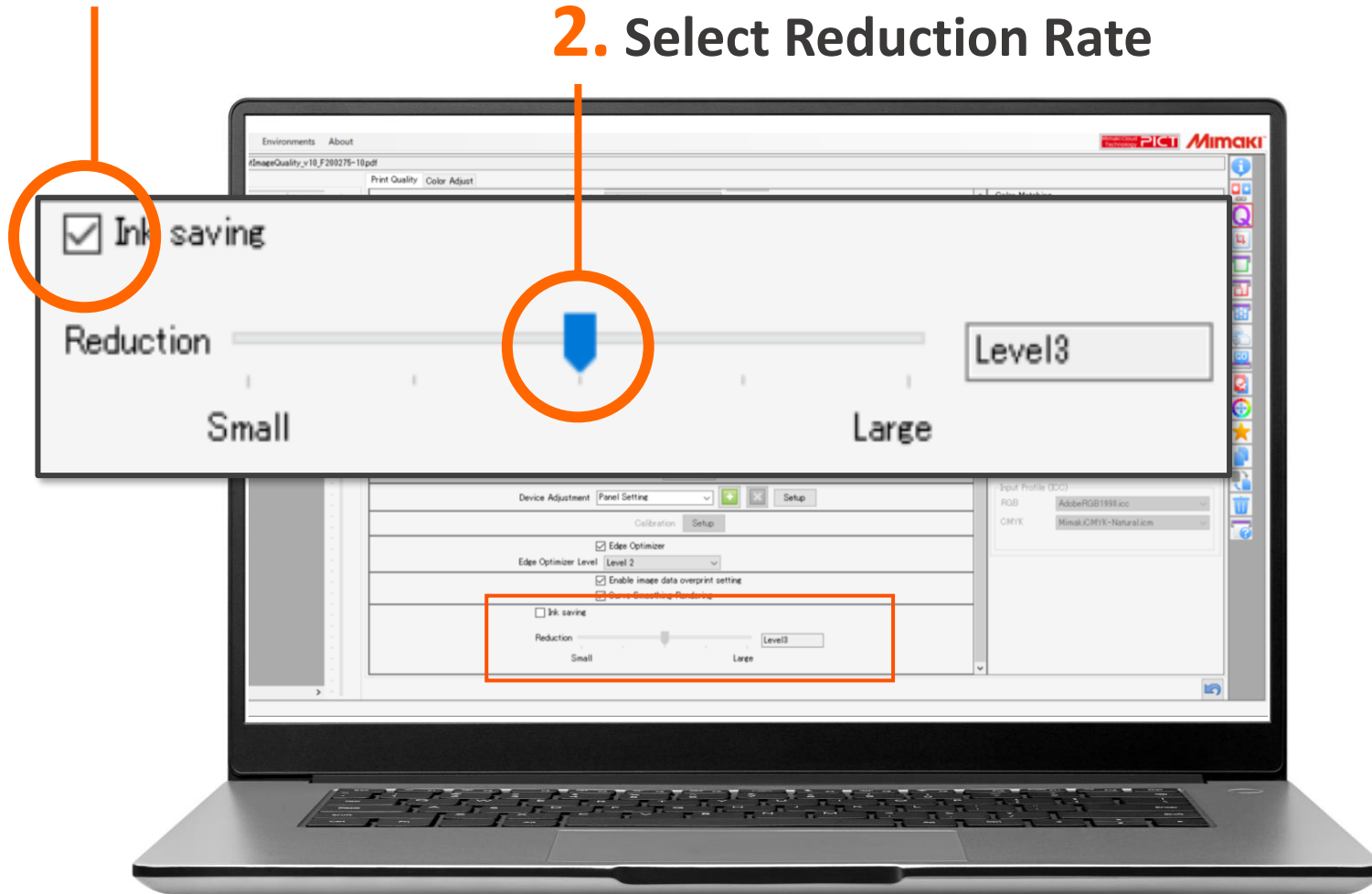
JV100	CJV200
12min 2sec	7min 14sec

Reduced Ink Consumption with Just 2 Clicks

Ink saving function

1. Check the ink saving box

2. Select Reduction Rate



Five-level adjustment
from Level 1 to Level 5

(About 10% reduction to about 50% reduction)

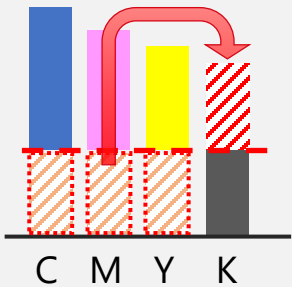
Reduce running costs by using
this function according to your
business needs.

Reduced Ink Consumption Across Any Media and Profiles

Since it is an independent function, there is no need to change the ICC profile or prepare a dedicated profile.



What principles are used to reduce ink consumption?



From Level 1 to Level 3, ink consumption is reduced by replacing CMY ink with K ink.



LEVEL 4 and above also narrow the color gamut, further reducing ink consumption.

Minimizes Ink Costs while Maintaining Natural Color



No-setting 3.852cc	Ink-saving Level3 2.750cc	Ink-saving Level5 2.195cc
-----------------------	------------------------------	------------------------------

-29%

-43%

Size : A2

CJV200 4C SS22 600x1200dpi 6pass *Reduction rate depends on data and profile. 19

Easy and Accurate Media Setup

Easy operation, automatic adjustment when media is set.

- Dot position adjustment (dot landing position for bidirectional printing)
- Feed adjustment (media feed speed)

DAS
(Dot Adjustment System)



How to use

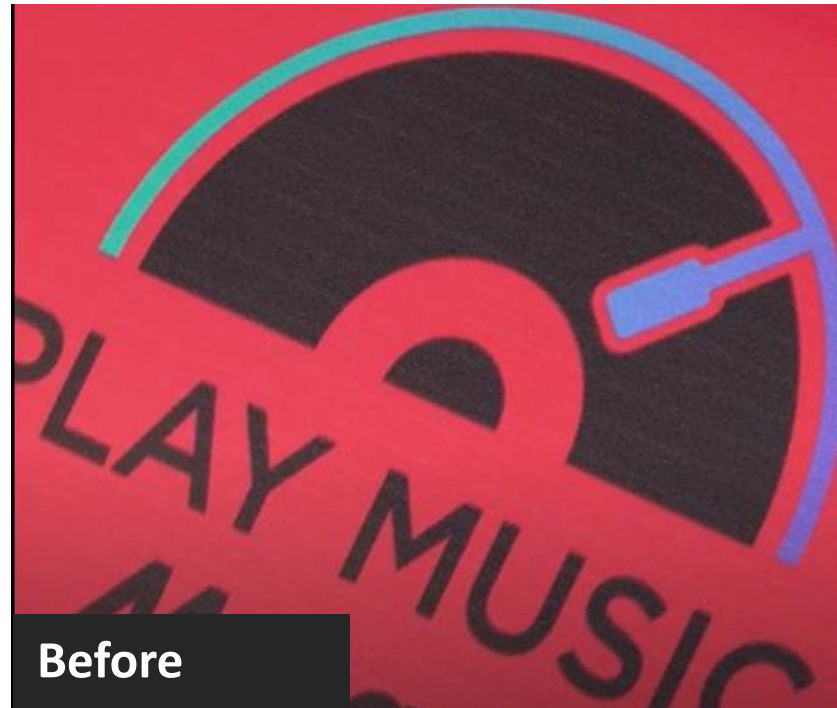
1

Setup1	
Feed Comp.	>
Drop.PosCorrect	>
Auto-correction	>
Logical Seek	Host
Over Print	Host
<<	>>

2

Auto-correction	
All	>
Feed	>
Drop.Pos	>

When "Auto Correction" > "All" is selected, feed correction and dot position correction are automatically performed for all resolutions. Feed correction and dot position correction can be performed individually or by resolution.



Before



After



Automatic adjustment, so you can "leave it alone" during adjustment.



No variation in image quality due to human skill.

※ Some media cannot be corrected properly due to errors such as color, reflective material, and bleeding media.

Easy-to-Use Design Software for Everyone

Intuitive software to create stickers, labels, POP, stickers, etc. easily even for those who are not familiar with professional DTP software.



Simple and intuitive operation that requires no instruction manual



Output instructions are available from this software.

Simple Create is standard on CJV200



CJV200 x Simple Create combination
for design production and sticker business



Sticker



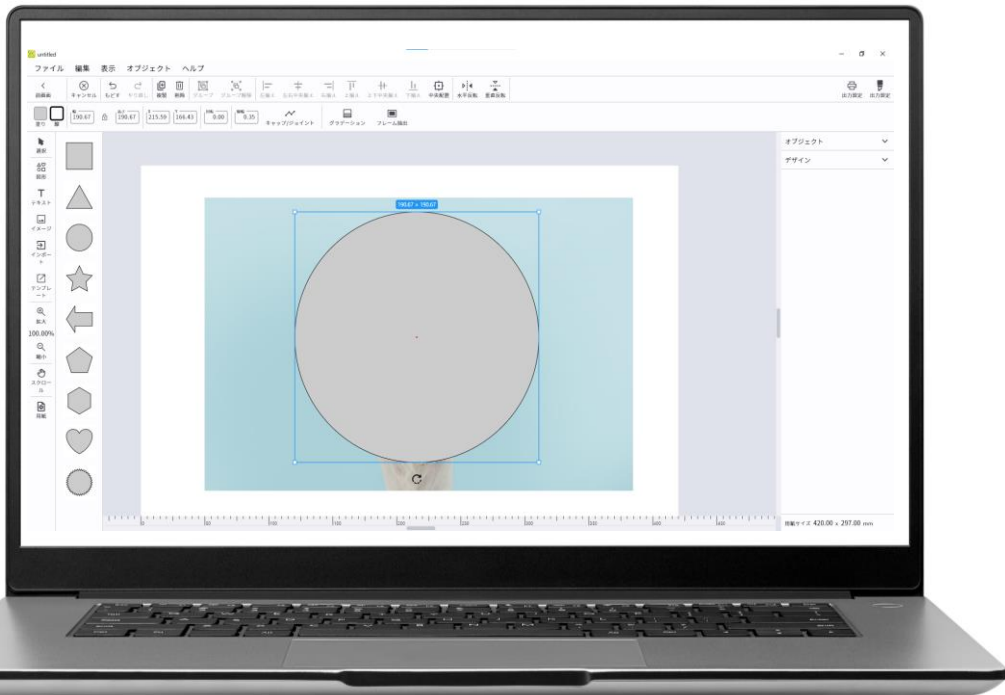
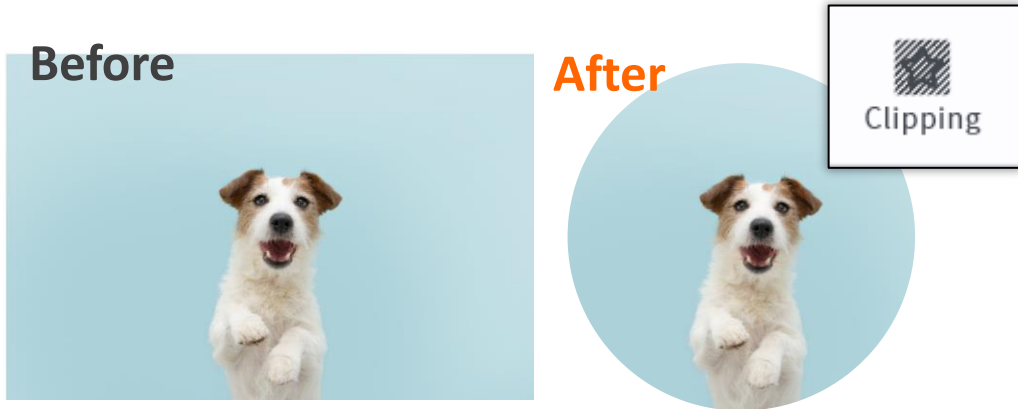
POP



Decal

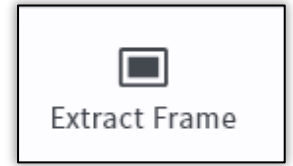


1 Click to cut through to your favorite shape.



1-button frame creation

Easily create playful designs and cut lines!



Before

117.20 × 48.41

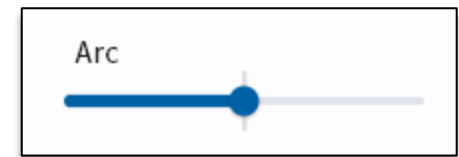


After

123.20 × 54.41



Stylize your text with one click.



Before

Happy Birthday

After

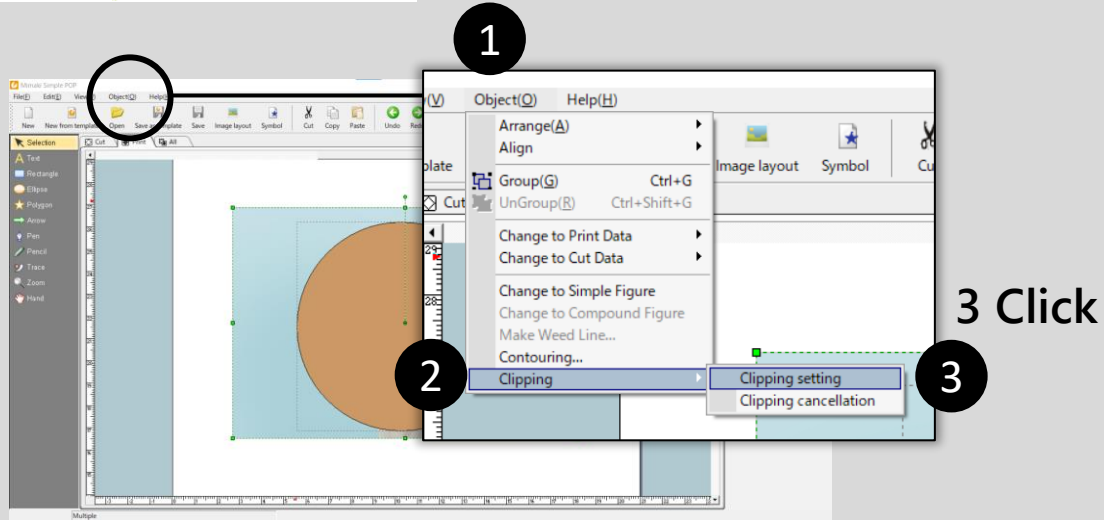
151.80 × 48.06

Happy Birthday

Simple POP

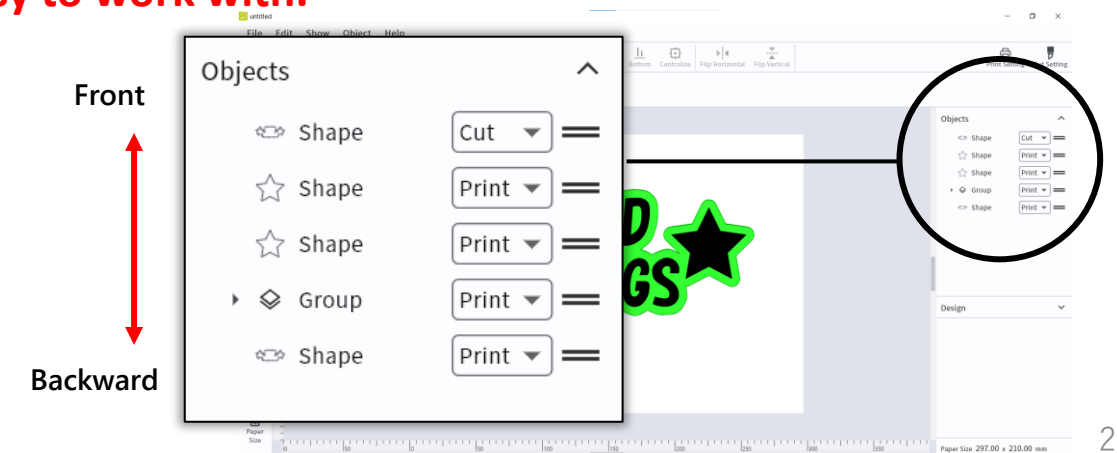
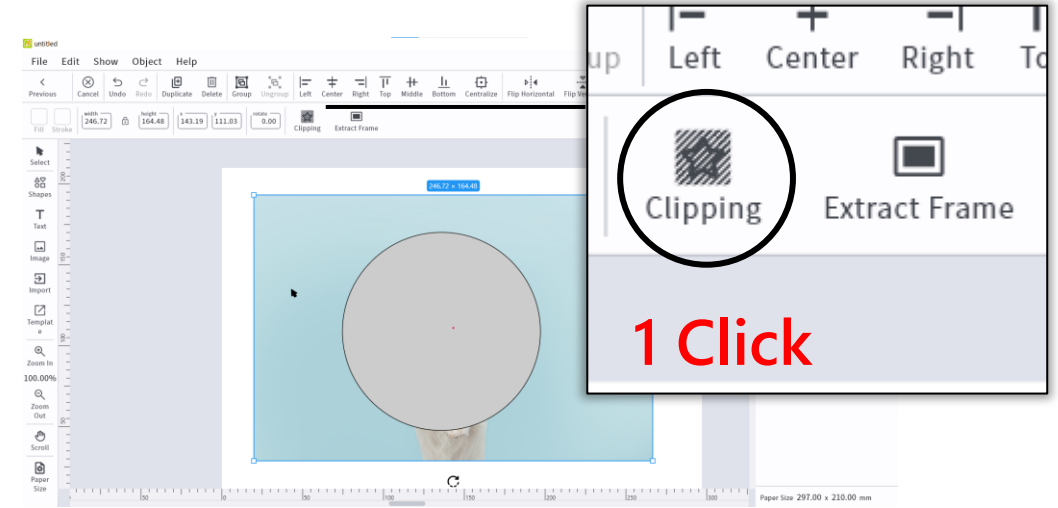
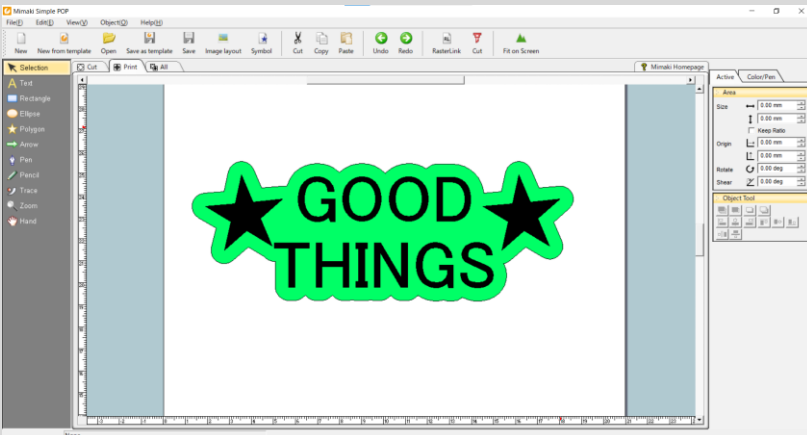
Hard to find tools

→ The tools you need at a glance



Difficult to work with due to lack of object management capabilities

→ The objects in the design can be seen at a glance, making it easy to work with.



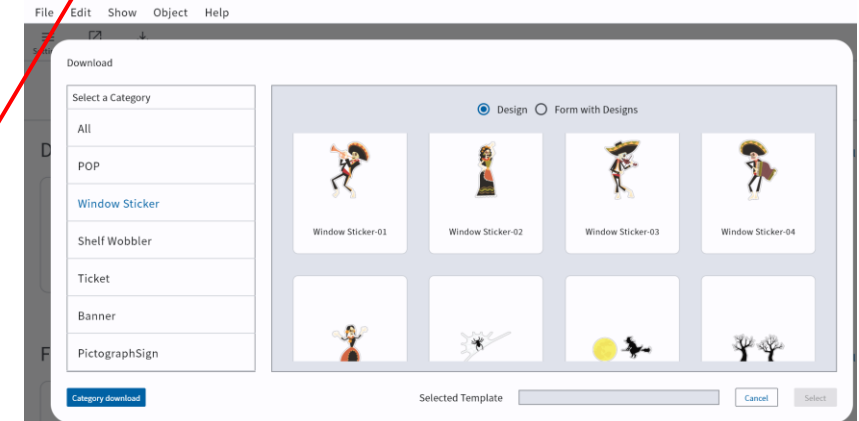
Simple POP Comparison

Specification Comparison (Comparison with SimplePOP)		Simple POP	Simple Create
Supported OS		Windows	Windows Mac, iOS, Android will be supported in the next ver1.1
Supported Models		UCJV150/300 Series, CJV150/300 Series, CJV300 Plus Series, CJV330 Series, CG-AR Series	CJV200, CG-AR Series
Software Installation		Download from Mimaki website	Download from Microsoft Store
Import	Image files	JPEG/BMP	JPEG/BMP/ PNG/TIFF/GIF
	Vector files	None	SVG
Export	Save files	Simple POP Original format (.mpx)	Simple Create Original format (.scd, .scb, .scj)
Output	RasterLink Output	<input type="radio"/>	<input type="radio"/>
	Plotter Output	<input type="radio"/> Via plotter driver	<input type="radio"/> Direct output
Function	Font Transformation	<input type="radio"/>	<input type="radio"/> Arc deformation
	Insertion and label creation using forms	✗	<input type="radio"/>
	Pen Tools	<input type="radio"/>	✗
	Direct template download	✗ (Download on the website)	<input type="radio"/>
Number of templates available		321	343
Supported languages		Japanese + English	Japanese + English *

Increased number of readable image file types

Enables variable data printing

Templates can be downloaded within the software



- Languages will be added in order in starting with version 1.1 which is scheduled for fall 2025

Three Key Points to Support Operations

01 Special Orange ink

02 Print and Cut with One machine

03 Simultaneous Printing and Cutting from a single Raster Link

Orange

Vivid orange expression without smearing
A "slyness" that stimulates the viewer's senses

Approx. **20%** wider
color gamut than 4-color ink sets

CJV200 SS224C(CMYK)

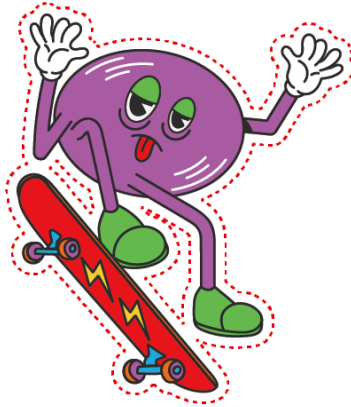
CJV200 SS228C(CMYKLcLmLk**Or**)



Print and Cut with One machine

Perforation cuttable

Stickers can be cut to shape or POP folds.



Save media and time on large orders

Zero margin trim mark



Less space between dragonflies and fewer dragonflies to read, saving media and time.

<Reference>

In case of cutting 100 sheets of 100mmx100mm stickers

Normal trim mark

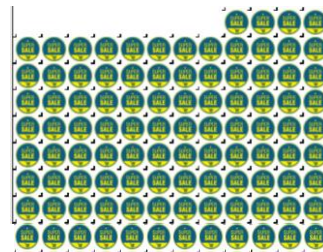
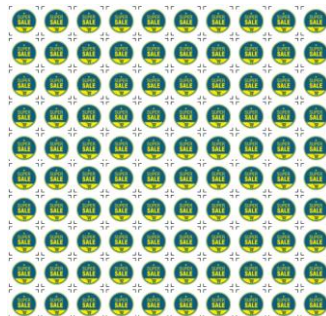
Approx.

50min50sec

zero margin trim mark

Approx.

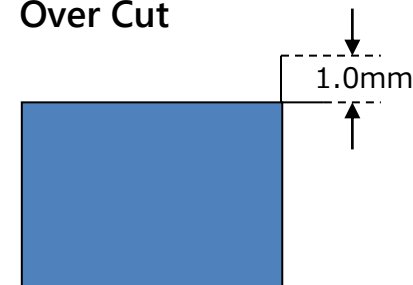
35min35sec



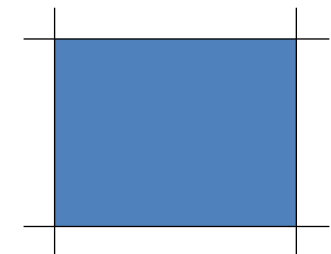
Achieves sharp cuts with no leftovers

Handles media prone to remainder and complex designs by overcutting the beginning and end of the cut. The beginning and end of the cut can be cut cleanly.

Over Cut

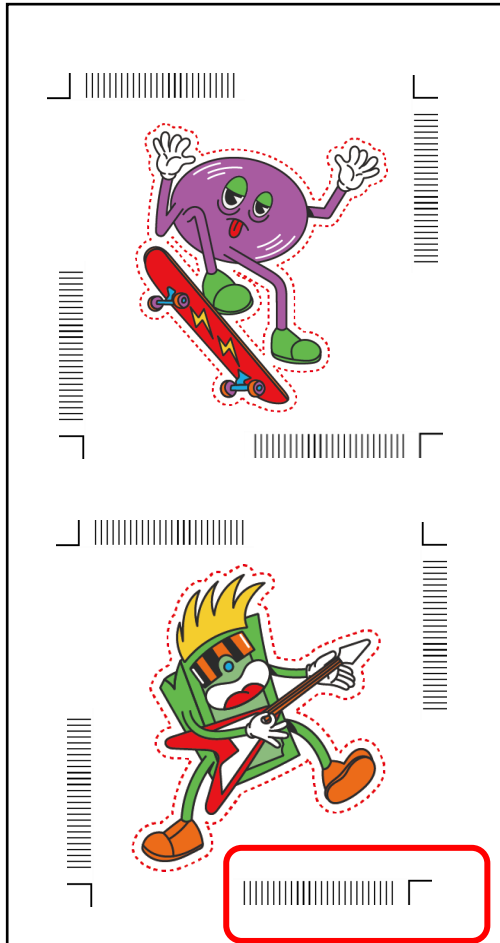
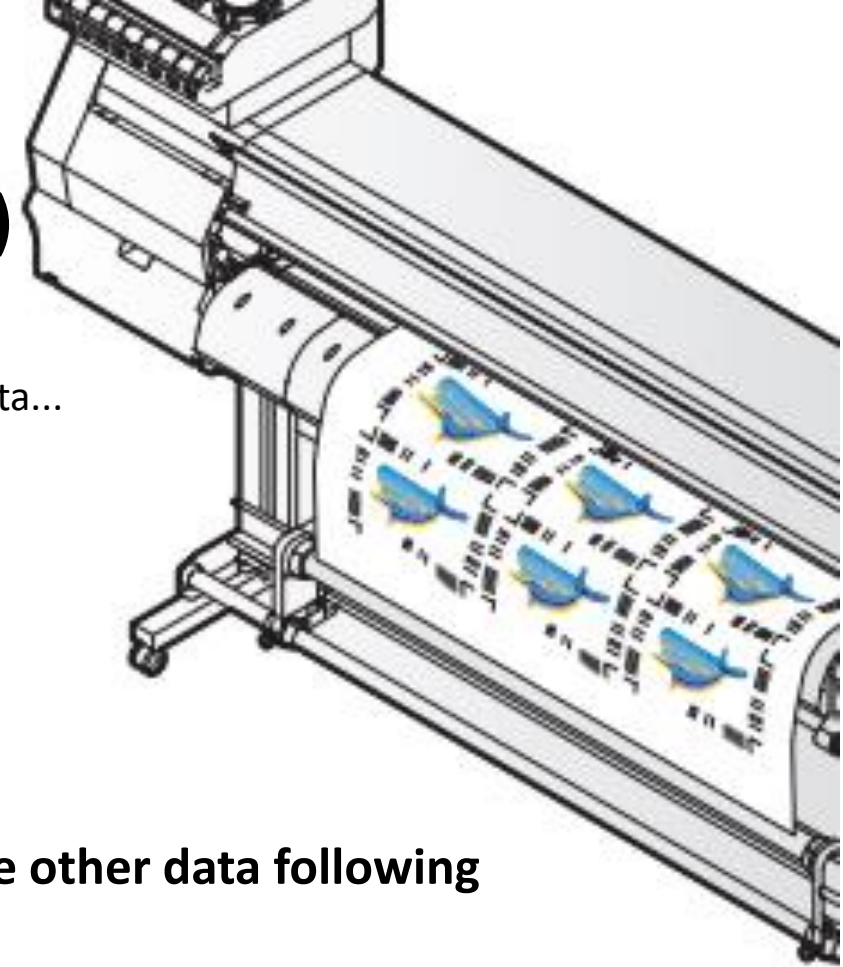


Corner cut



*Production speed is based on in-house evaluation and is not guaranteed.

Automatic detection of a dedicated ID prevents mistakes even in cutting after lamination. (ID cutting)



Printing a special ID on the media that identifies the cut data...

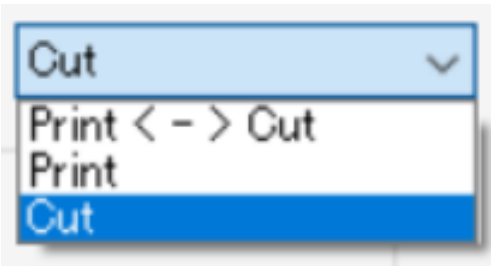
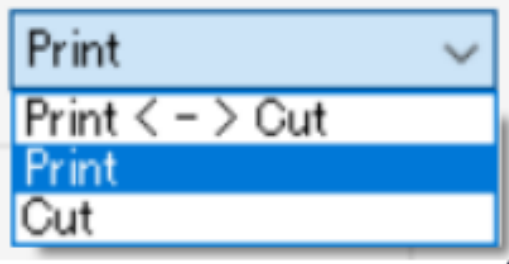


- ✓ **Automatic disconnection by simply detecting trim marks.**
- ✓ **Once the first trim mark is detected, the other data following it are automatically cut in succession.**
- ✓ **Automatic recognition of cutting direction no matter which way the media is set.
Reduces waste due to media installation errors**

Both printers and cutting plotters can output simultaneously from a RasterLink.

One cutting plotter can be registered per printer.

- ✓ Simultaneous operation reduces work time
- ✓ Reduces setting errors because the same data is output as for printing

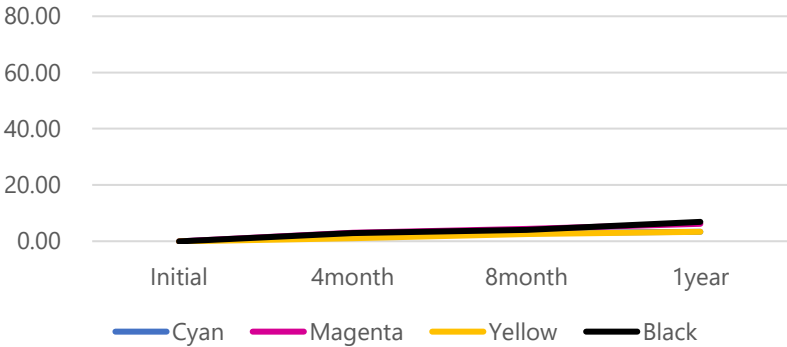


Peace of Mind at Work

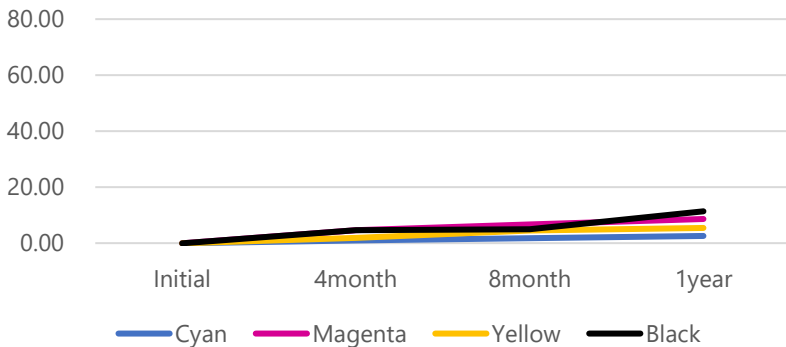
- 01** **The Industry's Best Ink
in Outdoor Weather Resistance**
- SS22 Overview
- 02** **Safety features in case of trouble**
- 03** **PICT Supports Business Efficiency
and Peace of Mind**

The Industry's Best Ink in Outdoor Weather Resistance

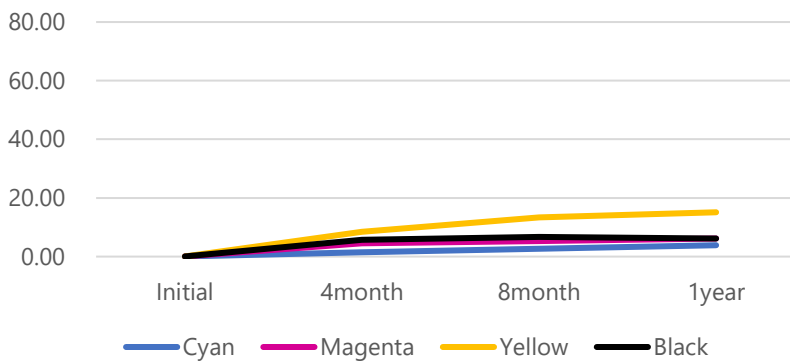
Mimaki SS22



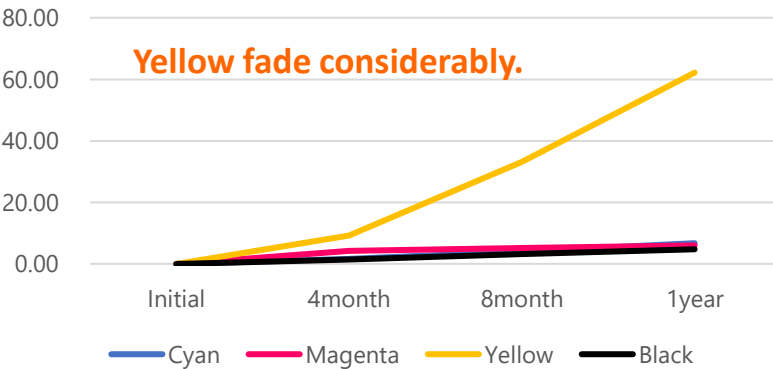
Mimaki SS21



Mimaki BS4



Competitor



Images are for illustrative purposes only.



Inherits **SS21** ink functionality

GBL-free ink excluding ingredients that are increasingly regulated worldwide

GBL-free ink is deployed in WW ahead of competitors

Consideration for worker safety

Reliable performance equivalent to SS21



It is a type of narcotic ingredient that is also found in familiar pharmaceuticals and is being increasingly regulated worldwide . In solvent printers, it is generally added as a component of ink.



Odor reduced from SS21

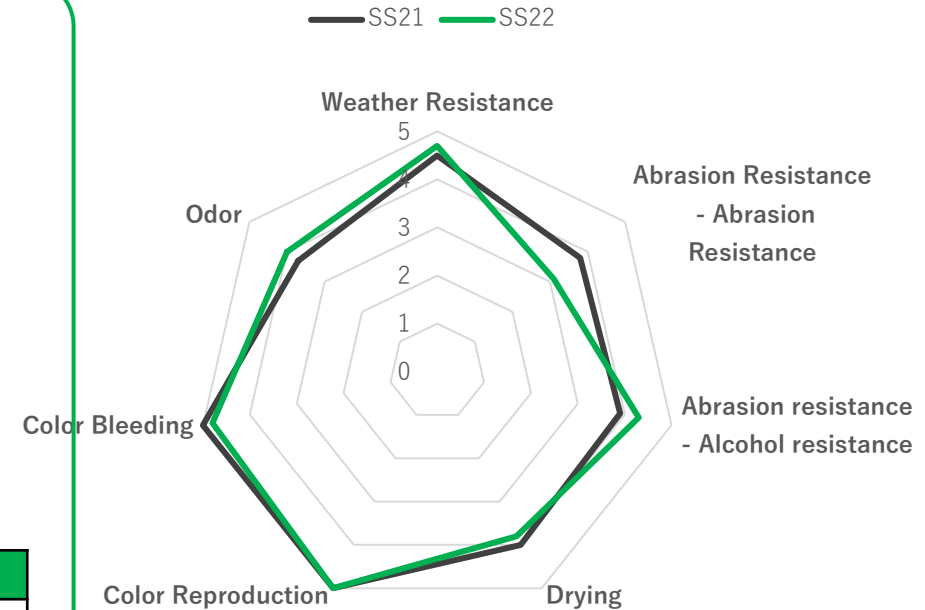
- Evaluate odor in a printing environment *1

SS21	SS22
4.2	3.8

Scoring is on a 6-point scale as follows
0...no odor
1 ... Barely perceptible odor
2 ... Smell that you know what it is
3... Smell that can be easily detected
4 ... Strong odor
5 ... Strong odor

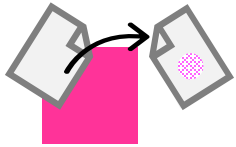
- Which ink smells stronger?

SS21	SS22
15/24 persons	9/24 persons



Equivalent dryness to SS21

*The higher the number, the better the result.



	SS21	SS22
--	------	------

Time until the color no longer appears on the reverse side of the release paper **137.5 sec** **136.3 sec**

Maximum density of tarpaulin without backing transfer **CMY 270%** **CMY 300%**

Reliable abrasion and alcohol resistance

*The higher the number, the better the result.

	SS21	SS22
--	------	------

Water Abrasion Resistance

Number of times the color transfers to a wet cotton swab.

97.5 **97.5**

Alcohol Resistance

Alcohol concentration at which color is transferred to cotton swab

79 % **83 %**

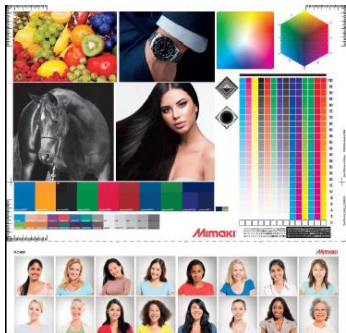
Scrape with a file

After filing 5 times, judge by the area of the shaved part.

6 p **5 p**

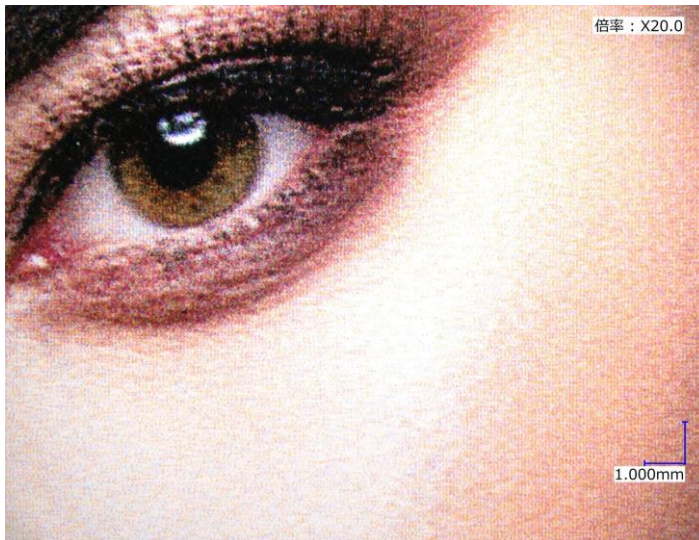
Equal image quality

8C(CMYKLcLmLkOr)

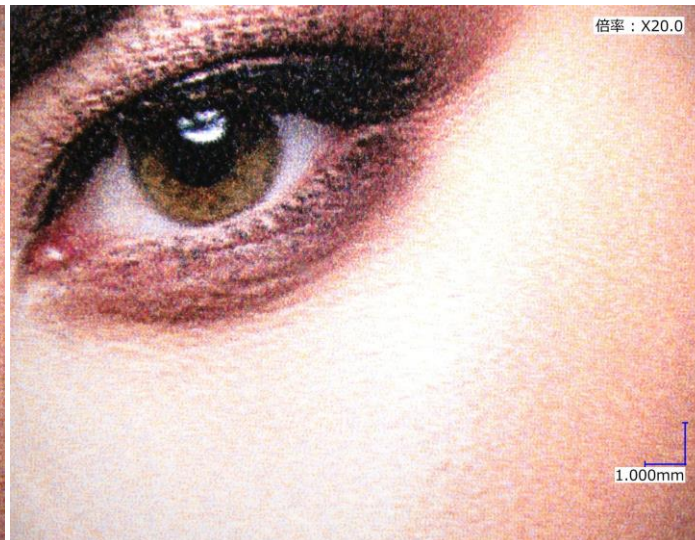


評価画像 : F200250

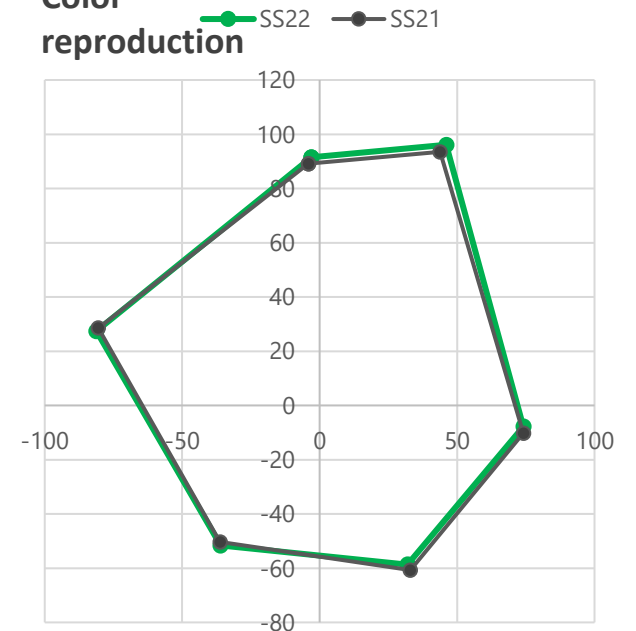
SS21 Ink consumption **1.42cc**



SS22 Ink consumption **1.50cc**



Color reproduction

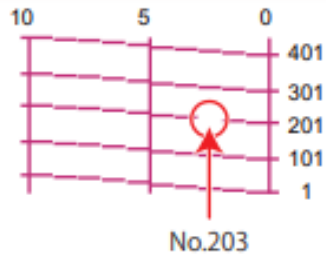


Safety Features in Case of Trouble

Nozzle Recovery :

The work does not stop when the nozzle problem occurs.

Even if a nozzle is missing that cannot be fixed by cleaning, printing continues using another nozzle in place of the defective nozzle.



Up to 20 nozzles can be registered per nozzle, **up to 160 nozzles** per head

Printing speed does not change when using Nozzle Recovery, so you can continue working as usual.

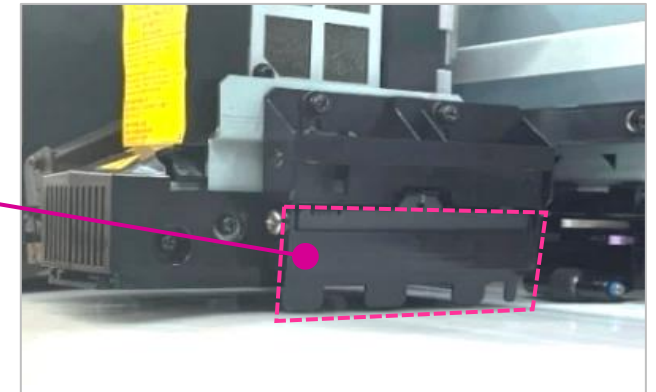
Vender	Mimaki	EPSON	Roland
Nozzle Recovery	✓	-	✓
Print speed	Same	-	Almost in half

Jam sensor :

Jam sensor reduces risk of head scraping

To prevent the print head surface from directly contacting the media, a sensor is attached to the print head. This reduces the risk of printhead damage.

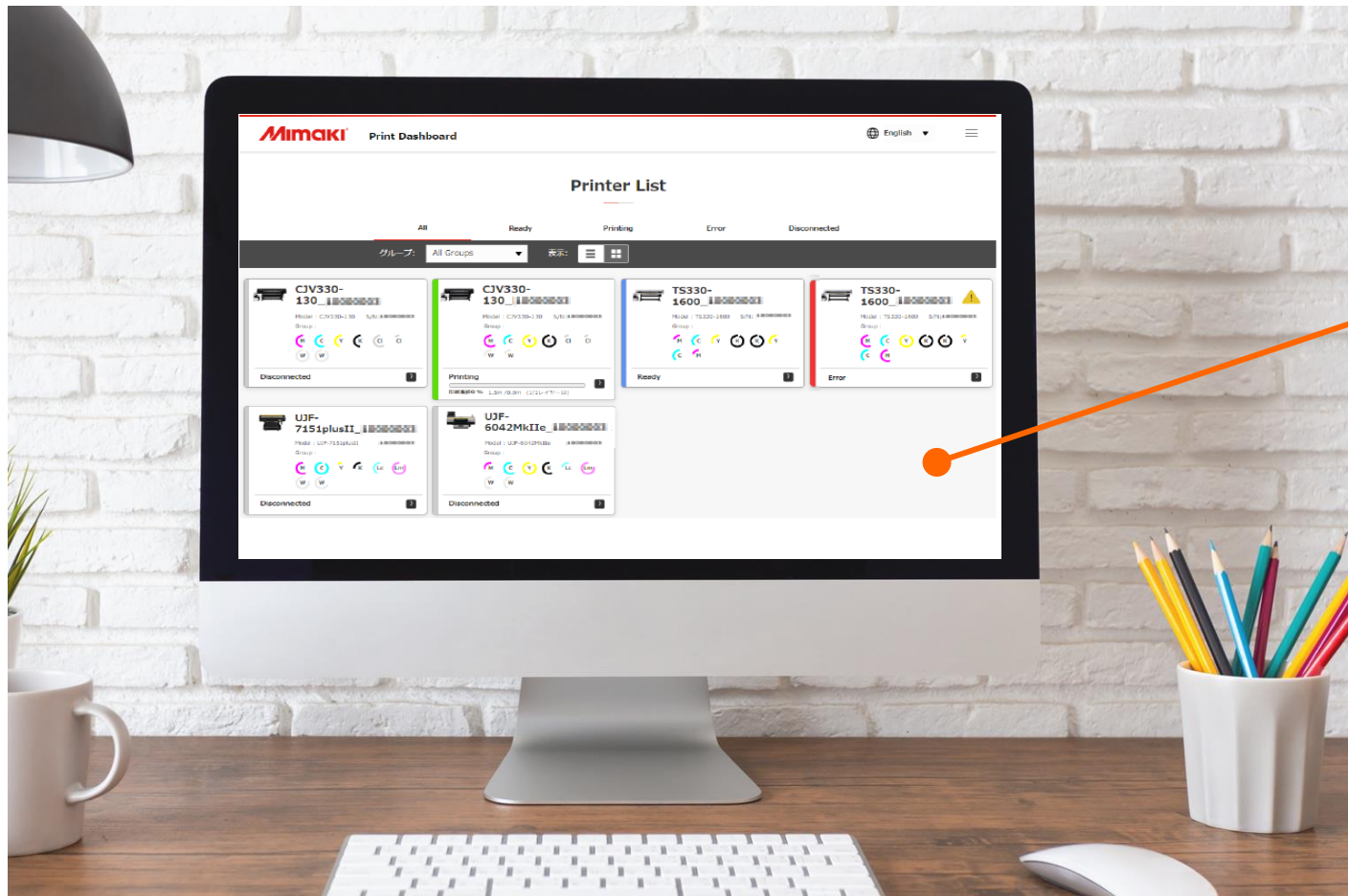
Sensor reacts and stops printing before the heads collide.



Vender	Mimaki	EPSON	Roland
Jam sensor	✓	-	-

PICT Supports Business Efficiency and Peace of Mind

Get detailed information about the printers you own anytime, anywhere!



Visualization with PICT

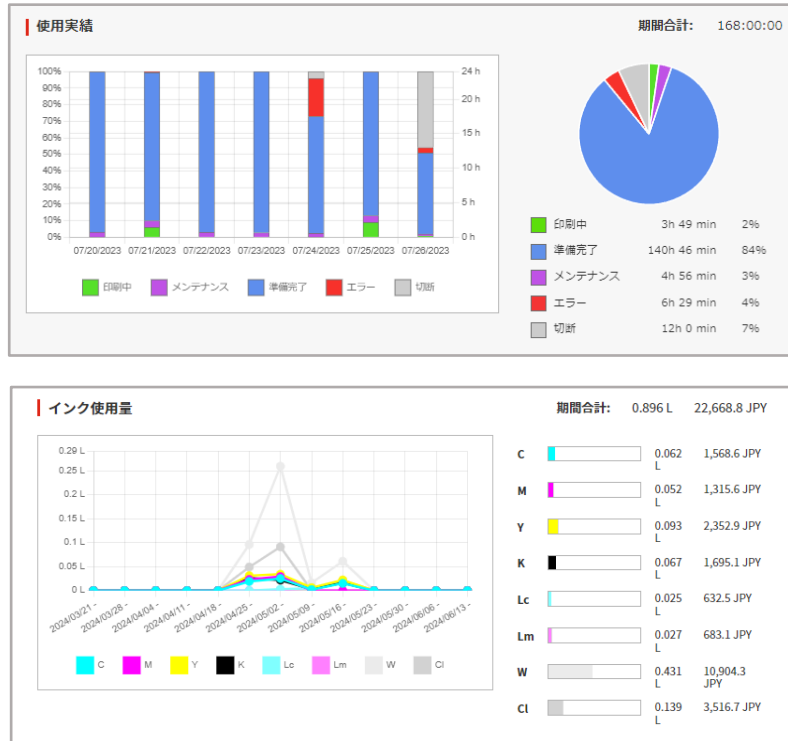
- Operational status of all owned machines
- Troubleshooting of machine problems
- Ink consumption



Error and print completion notifications allow users to quickly check status remotely.

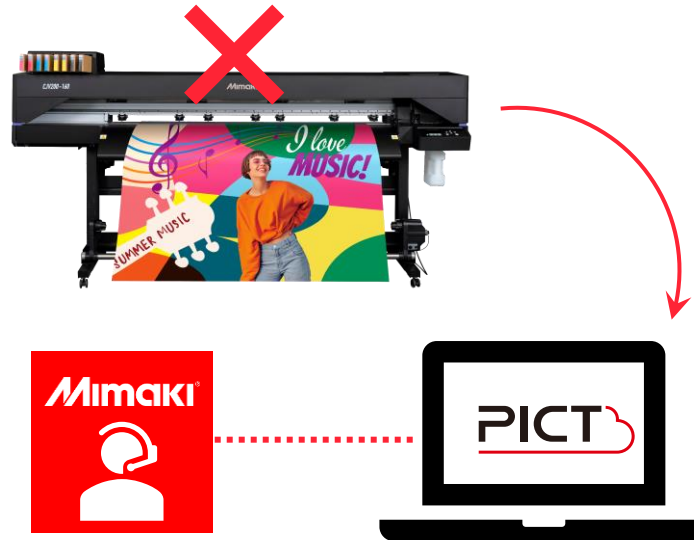
Provided by download from our website, available on PC and mobile device web browsers.

You can see all operating results for each day, each week, and each month.



Sales results and ink usage can be viewed on the PICT to support planned operations and cost management.

Prompt and accurate support in case of machine trouble



In the event of machine trouble, our staff immediately checks error information (log information) via PICT.

Predicts the cause of trouble based on machine error information, enabling faster and more accurate support than ever before.

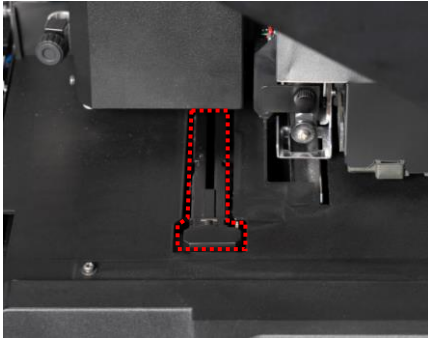
Printing status can be checked on a smartphone even if you are not there during printing.



E-mail notification when printing is complete or an error occurs. Output at night or while you are away from home is also assured.

Optional Goods

NCU



MBIS3
Mimaki Bulk ink System



MBIS BKT OPT



Level foot OPT*1

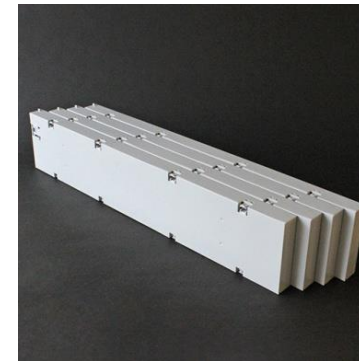


Front Cover



	Option	Part Number
1	NCU OPT	A105742/OPT-J0422
2	MBIS3 Mimaki Bulk ink System	A104872/OPT-J0364
3	MBIS BKT OPT	A107599/OPT-J0576
4	Level foot OPT*1	A106689/OPT-J0502
5	Front Cover 160OPT	A107601/OPT-J0578
6	Front Cover 130OPT	A107602/OPT-J0579
7	Front Cover 75OPT	A107603/OPT-J0580
8	ECO CASE4*2	OPT-J0361

ECO CASE4*2



*1 When using media weighing 25 kg or more, be sure to use the level foot OPT.

*2 When using a BS4 ink, please also prepare ECO CASE4.

Supply

	Supply	Part Number
1	BEMCOT M-3	A101437/ -
2	Swab 6-axis "S"	A101438/ -
3	MEDIA CUTTER BLADE	A101078/SPA-0107
4	Cleaning Stick for Head Surrounding	A102216/SPC-0527
5	KIMWIPE [®] S-200	A104634/SPA-0207
6	SQUARE WASTE INK TANK2L	A104849/SPA-0246
7	Cutter holder for Swivel Blade	A100001/SPA-0001
8	Cutter holder	A100640/SPA-0090
9	Swivel Blade for PVC sheet	A100006/SPB-0001
10	Swivel Blade for small letters	A100010/SPB-0003
11	Swivel Blade for reflecting sheet	A100015/SPB-0006
12	Swivel Blade for fluorescent sheet	A100039/SPB-0007
13	Swivel Blade for PVC with low-pressure	A100341/SPB-0030
14	Pen adapter	A102653/SPA-0169
15	Pinch Roller Set 4pcs	A102412/SPA-0166

	Supply	Part Number
16	Pinch Roller Set 3pcs	A102413/SPA-0167
17	Pen holder for Mitsubishi	A104334/SPA-0183
18	REFILL FOR MITSUBISHI BALLPOINT PEN	A104211/SPC-0726
19	PEN LINE RUBBER FOR 300/150-160	A104941/SPC-0770
20	PEN LINE RUBBER FOR 300/150-130	A104942/SPC-0771
21	PEN LINE RUBBER FOR 300/150-75	A104944/SPC-0773
22	PEN LINE SPONGE FOR [®] 300/150-160	A104953/SPC-0775
23	PEN LINE SPONGE FOR 300/150-130	A104954/SPC-0776
24	PEN LINE SPONGE FOR 300/150-75	A104956/SPC-0778
25	3 INCHES PAPER TUBE 160	A105785/SPC-0826
26	3 INCHES PAPER TUBE 130	A105784/SPC-0825
27	3 INCHES PAPER TUBE 75	A105782/SPC-0823
28	Cap E Assy	A107476/SPA-0361
29	CAP ABSORBER Assy	A107576/SPC-0939

Size, packaging size, installation space



	CJV200-160	CJV200-130	CJV200-75
Size(WxDxH)	2,770 x 748 x 1,370	2,520 x 748 x 1,370	1,960 x 748 x 1,370
Installation space(WxD)	3,770 x 2,748	3,520 x 2,748	2,960 x 2,748
Weight(kg)	140 kg	130 kg	105 kg
Packaging size(WxDxH)	2,910 x 750 x 830	2,660 x 750 x 830	2,100 x 750 x 830
Packaging weight	172 kg	160 kg	128 kg

! Note

- Do not install the unit in a place where there is a lot of dust or powder.
- If they get inside the main unit, they may cause malfunctions or poor discharge (clogged nozzle, bent flight, etc.).
- Do not install in a location where it is exposed to wind from an air conditioner or other source. Dust or powder may get inside .
- Do not install in an unstable or vibrating place. Doing so may cause malfunctions or poor discharge (clogged nozzle, bent flight, etc.).
- Do not install in a location exposed to direct sunlight .
- Do not install in locations subject to extreme temperature changes. Doing so may cause nozzle malfunction (nozzle clogging, flight path bending, etc.).
- Do not install in locations where large machinery that generates noise is located.

Specification

Item		CJV200-160	CJV200-130	CJV200-75
Print head		On-demand piezo head (single head)		
Printing resolution		Y:600,900,1200 dpi X:600,1200 dpi		
Head gap		2 levels by manual (1.5、 2.0mm)		
Media	Media Width	Min. 210mm Max. 1620mm	Min. 210mm Max. 1371mm	Min. 210mm Max. 810mm
	Max. Printing Width	1610mm	1361mm	800mm
	Outer dia.	Φ180mm or less		
	Weight	Max. 25kg or less		
	Core dia	2inch、 3inch		
Cut function	Cut speed / acceleration	Speed : Max. 300mm/s Acceleration : Max. 0.5G		
	Cut pressure	10-450gf		
	Cutter response times	10 times /sec		
	Repetition accuracy	±0.2mm		
Interface		USB2.0 Hi-speed / Ethernet 1000BASE-T		
Power		AC (100~120V / 200~240V±10%) ×2 50/60Hz±1Hz		
Power consumption		Max. :1320W x2 Sleep mode: 4.5W以下		
Operational environment	Temperature	20-30°C		
	Humidity	35~65%RH (No condensing)		
	Guaranteed accuracy temperature	20~25 deg C		
	Dust level	Equivalent to general office		
Size (W x D x H)		2,770×748×1,370	2,520×748×1,370	1,960×748×1,370
Weight		140 kg	130 kg	105 kg

System Configuration

PC



Connection Method



Printer



Recommended Ethernet cable

※USB 2.0 (recommended 5m) can be used for connection, but an Ethernet cable is recommended for smooth printing.

design software



Compatible with PS, EPS, TIFF, BMP, JPEG, PDF, etc.

Recommended System Environment

OS	Windows®11 Pro 64bit
CPU	Intel® Core™ i5-4670K(3.4Hz)
Chip set	Intel® Z87 Express
Memory	8GB
Hard disk	1TB or more free space (NTFS format)
Inter face	Ethernet port, USB1.1/2.0

Standard bundled software

< Design Software >



No DTP software required Design software that anyone can use

< RIP Software >

Supporting the beauty of prints and operability





Disclaimer

- MIMAKI ENGINEERING REJECTS ALL LIABILITY FOR DAMAGE ARISING DIRECTLY OR INDIRECTLY FROM THE USE OF THE CJV200 series ("THIS MACHINE" HEREINAFTER), WHETHER OR NOT THE PRODUCT IS FAULTY.
- MIMAKI ENGINEERING REJECTS ALL LIABILITY FOR DAMAGE, DIRECT OR INDIRECT, TO MATERIALS CREATED WHILE USING THIS MACHINE.
- USING THIS MACHINE IN CONJUNCTION WITH DEVICES OTHER THAN THOSE RECOMMENDED BY MIMAKI ENGINEERING MAY RESULT IN FIRE OR ACCIDENTS. SUCH INCIDENTS ARE NOT COVERED BY THE PRODUCT WARRANTY. MIMAKI ENGINEERING REJECTS ALL LIABILITY FOR DAMAGE, DIRECT OR INDIRECT, ARISING FROM SUCH INCIDENTS.
- USE ONLY GENUINE MIMAKI ENGINEERING INK AND MAINTENANCE LIQUID. USE OF OTHER PRODUCTS MAY RESULT IN FAILURES OR REDUCE PRINT QUALITY. SUCH INCIDENTS ARE NOT COVERED BY THE PRODUCT WARRANTY. MIMAKI ENGINEERING REJECTS ALL LIABILITY FOR DAMAGE, DIRECT OR INDIRECT, ARISING FROM SUCH INCIDENTS.
- DO NOT ATTEMPT TO REFILL THE INK CARTRIDGES WITH UNAUTHORIZED INK. SUCH INCIDENTS ARE NOT COVERED BY THE PRODUCT WARRANTY. MIMAKI ENGINEERING REJECTS ALL LIABILITY FOR DAMAGE, DIRECT OR INDIRECT, ARISING FROM SUCH INCIDENTS.