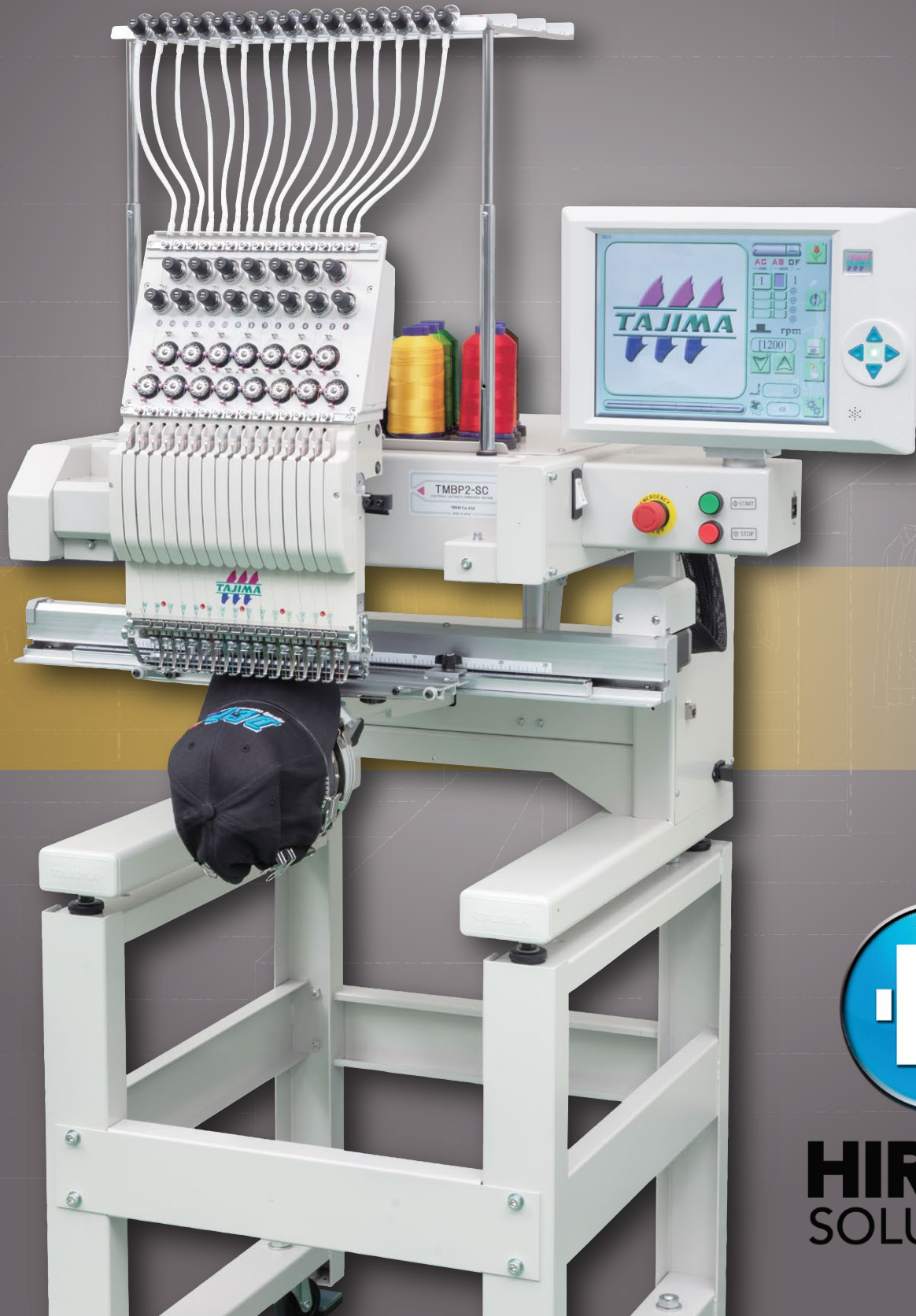




Electronic Single-Head Automatic Embroidery Machine

TMBP2-SC SERIES



HIRSCH
SOLUTIONS

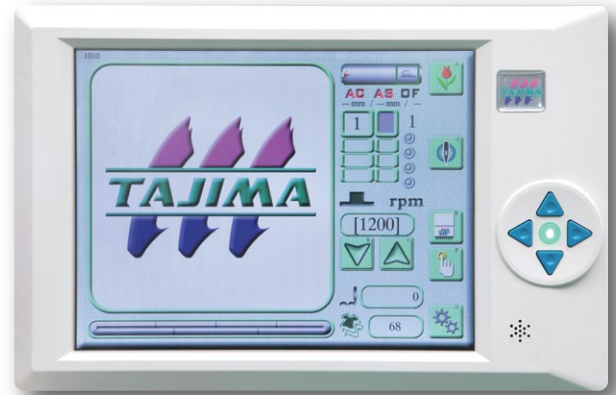
TMBP2-SC SERIES



Equipped with the industry's largest touch screen!



The large-scale 12.1-inch control panel is equipped with quick touch icons for your most used functions, making operation easier!



Greatly increased memory capacity!

Maximum design storage
200 designs → **650** designs

Maximum stitch count
2 million → **40** million



CARE@HSI.US

WWW.HSI.US

800.394.4426

Accurate and beautiful embroidery with a wide variety of frame types to meet diverse market needs.

A Slim Cubical Frame Design

The frame drive unit is located above. The suspended type allows more space for products and enables embroidery on large or bulky finished products.



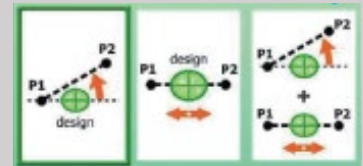
Enhanced cap frame structure

A strong support shaft is installed in the center of the cap frame to eliminate vibration of the drive unit, achieving stable sewing and improved sewing speed.



Design Position Adjustment Function

By setting any two points, even if fabric patterns are slanted when framing, you can be correct that on the operation panel.



Beautiful 3D embroidery on caps!



Precision embroidery on socks and cuffs!



Durable embroidery on leather bags!

The system was revised and the amount of thread tail remaining on the back of the fabric after thread trimming has been reduced by approximately 40%. The picker free mechanism simplifies bobbin replacement. In addition, the rotary hook cover has been improved to eliminate the clearance for the picker, minimizing the risk of snagging.



During bobbin replacement (Rotary hook cover open)

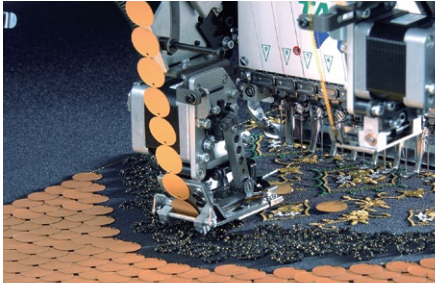


During operation (Rotary hook cover closed)

OPTION(S)

Sequin Device IV

A device for sewing a variety of sequins from 2mm to 22mm diameter, various shapes and eccentrics.



Seed Bead Device

Seed beads can be automatically selected between two colors with this device. Beads are enclosed in a special ribbon for easy replacement.



FRAME(S)



▲Tubular Frame
(360mm x 500mm)



▲Cap Frame 2
(75mm x 360mm)



▲Border Frame
(360mm x 500mm)



▲Sock Frame
(50mm x 30mm)



▲ Air type Clamp Frame 2
(80mm x 120mm
110mm x 140mm
140mm x 200mm)



▲ Air type Pocket Frame 2
(90mm x 30-258mm)



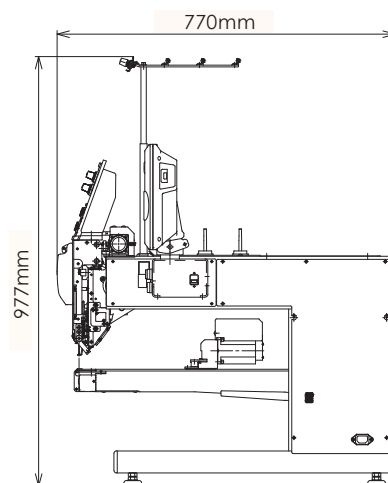
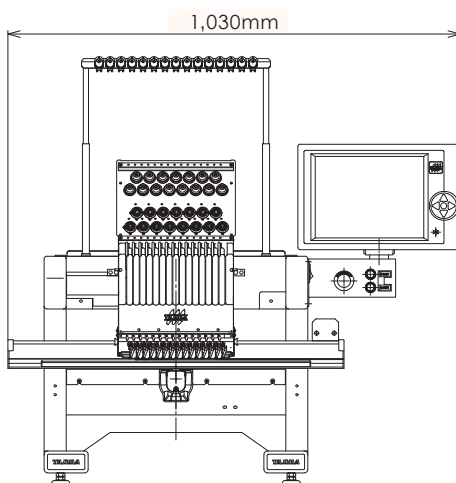
▲Pocket Frame
(45mm x 80mm
80mm x 55mm)



▲X-Extension Frame
(360mm x 1200mm)



▲M Frame 3
(set of 6 sizes)



SPECIFICATIONS

	TMBP2-SC
Needles	6,12,15
FACTORY OPTION(S)	Beam sensor, Position marker, LED lights, Signal tower, Laser cross marker, Sequin IV, Seed bead device, Air type clamp Frame 2/Air type pocket Frame 2.
Options	Tubular Frame, Border Frame, Cap Frame 2, X-Extension Frame, Pocket Frame, Sock Frame, M-Frame, TFA Frame, Lame embroidery attachment, Snarl prevention attachment, Leg stand, Leg tray,
Speed	Max. 1,200rpm
Electricity	Single phase 100V,200V,50Hz/60Hz
Power consumption	210VA/190W
Weight	95kg



CARE@HSI.US

WWW.HSI.US

800.394.4426